

BENTON COUNTY TRANSPORTATION SAFETY ACTION PLAN

DATE: June 10, 2025

TO: Project Team

FROM: John Bosket, PE; Harshala Sardar, PE; Brianna Velasquez, EIT |
DKS Associates

SUBJECT: Benton County Transportation Safety Action Plan
High Priority Network

Project #25003-000

The Benton County Transportation Safety Action Plan (TSAP) is intended to serve as a guide for investing in transportation safety through a Safe System approach. Following the evaluation of existing safety conditions and the identification of the High Injury Network, a recommended High Priority Network (HPN) was developed to highlight areas of the local transportation network where the County should focus its limited resources. This effort looked to identify locations where safety improvements could have the biggest impact on eliminating crashes that result in serious injuries or fatalities. This memorandum presents the recommended HPN and describes the steps in developing it.

HOW THE HIGH PRIORITY NETWORK WAS DEVELOPED

The High Injury Network (HIN), previously identified in the *Existing Safety Conditions Memorandum*, is the base network of the HPN.¹ Other information involving risk factors, demographics, and community input were integrated with the HIN to refine the list of segments and intersections based on the potential to experience a crash that could result in serious injuries or fatalities (Figure 1). Each of the inputs used is briefly described below.

¹ Existing Safety Conditions Memorandum, DKS Associates, May 2025.

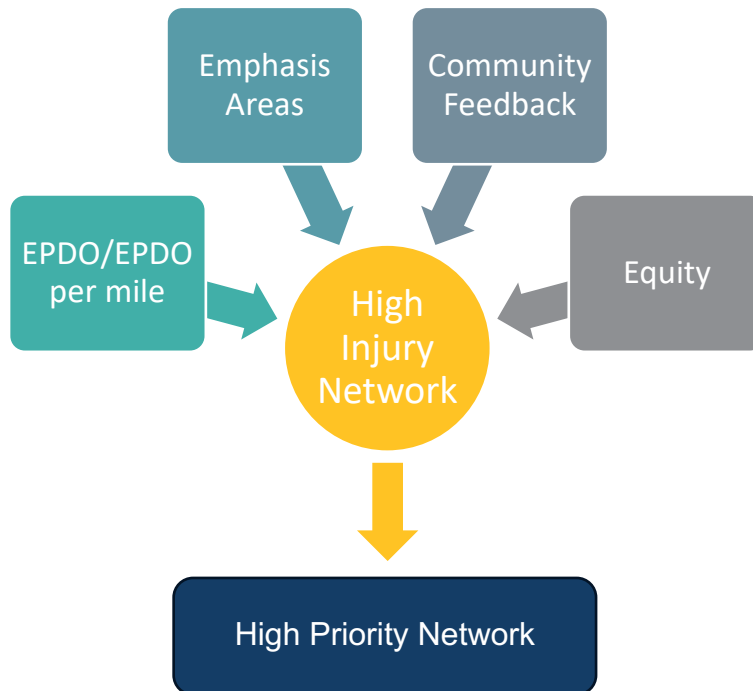


FIGURE 1: HIGH PRIORITY NETWORK SELECTION PROCESS

- **High Injury Network:** The roadway segments and intersections in the County with the highest concentration of fatal and serious injury crashes (based on historical crash data). Equivalent Property Damage Only (EPDO) scores from the Existing Conditions memo were used for ranking.
- **Emphasis Areas:** TSAP focus areas based on crash patterns and trends that were most predominant or overly represented in fatal and serious injury crashes. For this project, the selected Emphasis Areas include:
 - Roadway and Lane Departure
 - Risky Behaviors (includes factors such as Drug and Alcohol Impairment, Distracted Driving, and Speeding)
 - Intersections
 - Aging Drivers (65+ years of age)
 - People Biking

Note: Because HPN projects are infrastructure-oriented, distracted driving, impaired driving, and aging drivers were not used as inputs.

- **Community Feedback:** Input shared by community members about locations where they feel unsafe.

- **Equity Analysis:** An analysis of disparities in road safety considering the distribution of disadvantaged populations across the County (using the Oregon Social Equity Index tool) and their exposure to crashes.

To select areas for the HPN, the intersections and segments comprised in the HIN were scored based on their overlap with the other inputs, and the resulting scores were used as the basis for ranking locations. The degree to which each input influenced the scoring was determined by the relative weight applied. The HIN locations, which are based on historical crash data, were given the most weight to ensure the associated safety solutions identified are data-driven and have the greatest potential for a high benefit-to-cost ratio. The weighting applied to each input is listed below.

- High Injury Network - 40%
- Emphasis Areas - 40% (see breakdown below)
 - Roadway/Lane Departure – 10%
 - People Biking – 10%
 - Intersections – 10%
 - Speeding – 10%
- Community Feedback - 10%
- Equity Analysis - 10%

In contrast to the HIN, which included discrete “intersections” and “segments,” the HPN includes both discrete “intersections” as well as “corridors,” where corridors can include groups of the HIN segments and intersections that are in proximity. The corridors could ultimately be broken down into multiple project sites, depending on the issues noted and types of solutions recommended.

RECOMMENDED HIGH PRIORITY NETWORK

This section describes the intersections and corridors recommended for inclusion in the HPN based on the analysis described above. Comprehensive lists of HIN intersection and segment rankings, including locations that are not part of the HPN, are included in the appendix for reference. They are presented in order of rank (i.e., highest priority ranking listed first, and so on).

Facilities owned by ODOT or the City of Corvallis were ranked as part of this analysis but removed from consideration for the HPN since the City is developing its TSAP simultaneously and implementing safety solutions on its facilities. The Top 10 ranked corridors and intersections on ODOT facilities are summarized in Table 1 to help the County engage ODOT in discussions about prioritizing State funds for safety

improvement projects at these locations. Top 10 ranked corridors and intersections on City of Corvallis facilities are summarized in Table 2.

TABLE 1: HIGH PRIORITY ODOT-OWNED CORRIDORS AND INTERSECTIONS FOR SAFETY IMPROVEMENTS

Corridors	Intersections
1. OR 99W [4TH ST] (WESTERN BLVD TO TWIN OAKS CIR SOUTH)	1. US 20 & Granger Ave*
2. US 20 [PHILOMATH BLVD] (53RD ST TO COUNTRY CLUB DR)	2. US 20 [Philomath Blvd] & 35th St
3. US 20 (County Boundary to Corvallis City Limits)	3. OR 99W & Conifer Blvd
4. US 20 [PHILOMATH BLVD] (ODOT DRIVEWAY TO RR OVERPASS)	4. US 20 & Independence Hwy*
5. OR 99W (WALNUT BLVD TO CORNELL AVE OVERPASS)	5. US 20 [Philomath Blvd] & Technology Loop
6. OR 99W (3 Mile Ave to Barclay Ln)	6. US 20 [Philomath Blvd] & Sunset Dr
<i>BOLD locations are also identified by the City of Corvallis's as High Priority locations</i>	
<i>*These locations have recently undergone projects that may have enhanced safety</i>	

TABLE 2: HIGH PRIORITY CITY OF CORVALLIS-OWNED CORRIDORS AND INTERSECTIONS FOR SAFETY IMPROVEMENTS

Corridors	Intersections
1. 9TH ST (SEQUOIA AVE TO BUCHANAN AVE)	1. 9th St and Harrison Blvd
2. CIRCLE BLVD (HIGHLAND DR TO 9TH ST)	2. Harrison Blvd & 29th St
3. CONIFER BLVD (OR 99W TO CAMBRIDGE CIR)	3. 35th St & Western Blvd
4. 15th St (Western Blvd to E Ave)	4. 9th St & Van Buren Ave
5. CIRCLE BLVD (KINGS BLVD TO 17TH ST)	
6. Highland Dr (Meadow Ridge Pl to Conifer Blvd)	
<i>Bold locations are also identified in the City of Corvallis's draft High Priority Network</i>	

RECOMMENDED HIGH PRIORITY NETWORK CORRIDORS AND INTERSECTIONS (COUNTY-OWNED ONLY)

The recommended HPN corridors and intersections are illustrated in Figure 2 and described below. Any recent improvements that were completed during or after the crash data analysis period (2018-2022) that could have improved safety since that time have been noted for consideration. Also, funded projects that are expected to be implemented in the near future are noted as well.

1. Independence Hwy (Springhill Dr to US 20) Corridor

Note: This corridor includes the Priority Intersections at Springhill Dr, Ryals Ave, and Metge Ave

2. Ryals Ave (Birch Ln to Independence Hwy) Corridor

Note: This corridor includes the Priority Intersection of Ryals Ave & Independence Hwy.

Recent improvements with the potential to improve safety:

- 4-5' shoulders added and chip seal treatment completed in 2019

3. Sulphur Springs Rd (Forest Springs Ln to Wildview Pl) Corridor

4. Alpine Rd (Foster Rd to Alpine Cut Off Rd) Corridor

Recent improvements with the potential to improve safety:

- Chip seal completed in 2021

5. Springhill Dr (Westminster Way to Ferguson Dr) Corridor

Recent improvements with the potential to improve safety:

- Overlay and centerline rumble strips added in 2019

6. Bellfountain Rd (Airport Ave to Llewellyn Rd) Corridor

Note: This corridor includes the Priority Intersection of Llewellyn Rd & Bellfountain Rd.

Planned projects that could improve safety:

- In 2027, a project will install centerline rumble strips from:
 - MP 1.4 (1/2 mile south of Chapel Drive) to MP 12.9 (Bruce Road), and
 - MP 14.9 (Smittys Place) to MP 15.7 (Bull Run)
- In 2027, a project will add intersection warning aids at Chapel Drive, 53rd Street, Airport Road, Llewellyn Road, Decker Road, Greenberry Road, Dawson Road, and Alpine Road. Intersection warning aids may include new street signs, larger stop signs, reflectorized sign posts, rumble strips across the lanes on Llewellyn Road, reflectorized backplates on overhead flashing beacons, post mounted flashing beacons, and installing red diamond signs at T-intersections.

7. Fern Rd (Powderhouse Rd North to Powderhouse Rd South) Corridor

8. 53rd St (Campus Way to Reservoir Ave) Corridor

9. West Hills Rd (Reservoir Ave to 19th St) Corridor

Note: This corridor includes the Priority Intersection of West Hills Rd & Rosecrest Dr.

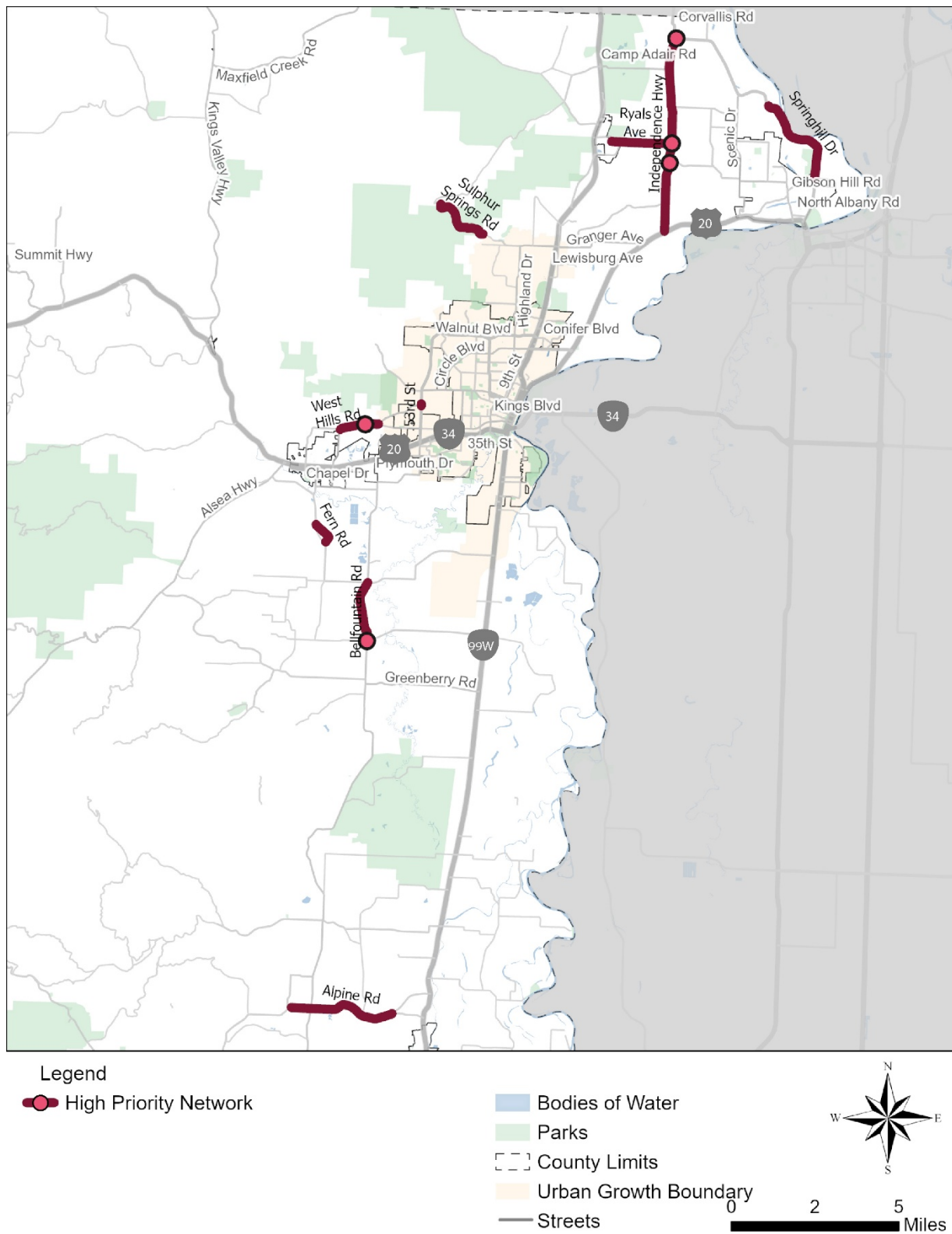


FIGURE 2: RECOMMENDED HIGH PRIORITY NETWORK

NEXT STEPS

Once the HPN locations have been confirmed, the Project Team will assess each location and select up to 10 sites for safety improvement project development. As part of the Transportation Safety Action Plan and the overall Safe System approach, these specific projects will be complemented with recommended changes to policies, processes, and standards as well as systemic solutions targeted at Emphasis Areas.

APPENDIX

The tables below summarize the prioritization rankings of segments and intersections on the HIN.

TABLE A: HIGH INJURY NETWORK SEGMENTS RANKED BY PRIORITY

HIN Ref #	Location	Ownership	Rank
1	OR 99W [4th St] (Western Blvd to Twin Oaks Cir South)	ODOT	1
2	9th St (Sequoia Ave to Buchanan Ave)	City of Corvallis	2
3	US 20 [Philomath Blvd] (53rd St to Country Club Dr)	ODOT	3
4	Circle Blvd (Highland Dr to 9th St)	City of Corvallis	4
5	Conifer Blvd (OR 99W to Cambridge Cir)	City of Corvallis	5
7	US 20 (County Boundary to Corvallis City Limits)	ODOT	6
8	US 20 [Philomath Blvd] (ODOT Driveway to RR overpass)	ODOT	7
16	15th St (Western Blvd to E Ave)	City of Corvallis	8
10	Circle Blvd (Kings Blvd to 17th St)	City of Corvallis	9
12	Highland Dr (Meadow Ridge Pl to Conifer Blvd)	City of Corvallis	10
18	Western Blvd (Deon Dr to Ivy Pl)	City of Corvallis	11
46	Independence Hwy (Pettibone Dr to US 20)	County	12
52	Sulphur Springs Rd (Forest Springs Ln to Wildview Pl)	County	13
53	Ryals Ave (Birch Ln to Independence Hwy)	County	14
6	OR 99W (Walnut Blvd to Cornell Ave Overpass)	ODOT	15
57	OR 99W (3 Mile Ave to Barclay Ln)	ODOT	16
43	OR 99W (Crane Ln to Arboretum Rd)	ODOT	17
45	OR 99W (Territorial Hwy to Schultz Rd)	ODOT	18
54	Alpine Rd (Foster Rd to Alpine Cut Off Rd)	County	19
11	Kings Blvd (Circle Blvd to Elmwood Dr)	City of Corvallis	20
13	OR 34 [Van Buren Ave] (1st St to County Boundary)	ODOT	21
19	Springhill Dr (Westminster Way to Ferguson Dr)	County	22
23	10th St (Beca Ave to Buchanan Ave)	City of Corvallis	23
35	Witham Hill Dr (Canary Pl to Elmwood Dr)	City of Corvallis	24
40	US 20 (OR 180 to Davis Rd West)	ODOT	25
60	Bellfountain Rd (Airport Ave to Llewellyn Rd)	County	26

HIN Ref #	Location	Ownership	Rank
50	OR 99W (Camp Adair Rd to Adair Frontage Rd North)	ODOT	27
14	US 20 [Main St] (26th St to Newton St)	ODOT	28
21	US 20 (Priest Rd to Lone Star Rd)	ODOT	29
37	Kings Blvd (Grant Ave to Beca Ave)	City of Corvallis	30
39	Walnut Blvd (Garryanna Dr to 13th St)	City of Corvallis	31
42	Fern Rd (Powderhouse Rd North to Powderhouse Rd South)	County	32
9	53rd St (Campus Way to Reservoir Ave)	County	33
15	West Hills Rd (Bullevard St to Reservoir Ave)	County	34
30	Pioneer St (Tasman Pl to Adelaide Dr)	City of Philomath	35
36	Mulkey Ave (23rd St to Kings Blvd)	City of Corvallis	35
49	Independence Hwy (Camp Adair Rd to Gilmour Ln)	County	36
17	Springhill Dr (Pointe Dr to Benton Pl)	County	37
20	West Hills Rd (19th St to Bailey St)	County	38
25	Gibson Hill Rd (Grandview Dr to North Heights Dr)	City of Albany	39
34	Coon Rd (Cherry Creek Rd to Elbett Ln)	County	39
38	Western Blvd (Stamm Pl to Poplar Pl)	City of Corvallis	39
59	OR 34 (Salmonberry Rd to Vernon Rd)	ODOT	40
51	US 20 (West of Blodgett Rd West to County boundary)	ODOT	41
56	Marys Peak Rd (West Point Spur to Summit)	Private	42
58	OR 180 (Devitt Rd to Atticus Ln)	ODOT	43
61	OR 34 (Marys Peak Rd to Cedar Creek Rd)	ODOT	44
63	OR 223 (Tatum Ln to County Boundary)	ODOT	45
64	Llewellyn Rd (Venell Ln to OR 99W)	County	46
66	South Fork Rd (Tobe Creek Rd to BLM Management Area)	County	47
31	US 20 [Main St] (17th St to 18th St)	ODOT	48
55	Soap Creek Rd (Govier Pl North to Govier Pl South)	County	49
22	OR 34 (Gray Creek Lane to Henkle Way)	ODOT	50
26	North Albany Rd (Thorton Lake Dr to Jones Ave)	City of Albany	51
27	Thornton Lake Dr (Edgewood Dr to Thornton Lake Pl West)	County	51
28	Wood Duck Ln (Mallard Ln to Extents)	Private	51
32	Airport Ave (OR 99W to Lowe St)	County	51
33	OR 34 (Hill Top Rd to Digger Creek Rd)	ODOT	51

HIN Ref #	Location	Ownership	Rank
44	OR 34 (Greasy Creek Rd to Decker Rd)	ODOT	52
47	OR 223 (Alexander Rd to Zenczak Ln)	ODOT	53
48	Pettibone Dr (Avalon Dr to Haugen Rd)	County	54
62	Marys River Rd (Hoskins Rd to Long Rd)	County	55
24	Cascade Heights Dr (Alpine Meadow to Cascade Falls Ct)	City of Albany	56
29	Marys River Estates Rd (Cascara Ln to Chicory Ln)	Private	56
41	OR 501 (OR 34 to Rycraft Ln)	ODOT	57
65	Maxfield Creek Rd (Ward Rd to Maxfield Creek)	County	58

TABLE B: HIGH INJURY NETWORK INTERSECTIONS RANKED BY PRIORITY

HIN Ref #	Location	Ownership	Rank
1	US 20 & Granger Ave	ODOT	1
3	US 20 [Philomath Blvd] & 35th St	ODOT	2
10	9th St and Harrison Blvd	City of Corvallis	3
23	Harrison Blvd & 29th St	City of Corvallis	4
5	35th St & Western Blvd	City of Corvallis	5
4	9th St & Van Buren Ave	City of Corvallis	6
9	OR 99W & Conifer Blvd	ODOT	7
2	US 20 & Independence Hwy	ODOT	8
14	Ryals Ave & Independence Hwy	County	9
16	US 20 [Philomath Blvd] & Technology Lp	ODOT	10
21	9th St & Garfield Ave	City of Corvallis	11
22	Kings Blvd & Circle Blvd	City of Corvallis	11
24	Circle Blvd & Four Acre St	City of Corvallis	11
35	Highland Dr & Sequoia Ave	City of Corvallis	12
42	Lincoln Ave & 29th St	City of Corvallis	13
43	Independence Hwy & Metge Ave	County	14
20	Kings Blvd & Walnut Blvd	City of Corvallis	15
26	5th St & Adams Ave	City of Corvallis	16
28	Kings Blvd & Grant Ave	City of Corvallis	17
45	Arrowood Cir & 29th St	City of Corvallis	18
55	Goodnight Ave & Midvale Dr	City of Corvallis	19

HIN Ref #	Location	Ownership	Rank
7	OR 99W [3rd St] & Western Blvd	ODOT	20
8	Walnut Blvd & Glenridge Dr	City of Corvallis	21
13	10th St & Buchanan Ave	City of Corvallis	22
18	5th St & Tyler Ave	City of Corvallis	23
19	US 20 [Philomath Blvd] & Sunset Dr	ODOT	24
27	35th St & Jackson Ave	City of Corvallis	25
29	OR 99W & Camp Adair Rd	ODOT	26
33	Campus Way & 35th St	City of Corvallis	27
34	OR 99W & Elliott Cir	ODOT	28
37	Grant Ave & 11th St	City of Corvallis	29
11	US 20 & North Albany Rd	ODOT	30
46	OR 99W & Goodnight Ave	ODOT	31
49	7th St & Western Blvd	City of Corvallis	32
52	OR 34 & Decker Rd	ODOT	32
17	Garfield Ave & Highland Dr	City of Corvallis	33
32	Springhill Dr & Independence Hwy	County	34
36	OR 99W & Mountain View Dr	ODOT	35
48	11th St & Campus Way	City of Corvallis	36
6	Llewellyn Rd & Bellfountain Rd	County	37
30	Highland Dr & Lewisburg Ave	County	38
38	Washington Way & 15th St	City of Corvallis	39
12	OR 99W [3rd St] & Van Buren Ave	ODOT	40
15	US 20 [Main St] & 19th St	ODOT	41
25	5th St & Jefferson Ave	City of Corvallis	42
31	Gibson Hill Rd & Gibson Way	City of Albany	43
39	US 20 & Priest Rd	ODOT	44
40	West Hills Rd & Rosecrest Dr	County	45
41	US 20 & Merloy Ave	ODOT	45
44	OR 99W & Airport Ave	ODOT	46
47	Hayes Ave & 23rd St	City of Corvallis	47
50	Washington Way & 17th St	OSU	47
51	OR 99W & McKenzie Ave	ODOT	47
53	US 20 [Main St] & 8th St	ODOT	47
54	US 20 & Rainwater Ln	ODOT	47