

Benton County Public Works Corvallis-Albany Bikeway Advisory Group Meeting #3 Select Conceptual Routes

Wednesday, March 22, 12:00-2:00 p.m.

Meeting Notes

Attendance:

Members

Byron Cook
Bob Durst
Chris Foulke (absent)
Mac Gillespie
Kevin Grant
Patrick (Pat) Hayes
Michael McGowen
Mary Pat Parker
Kenny Reynolds
Rick Robinson (absent)
Jennifer Ward

Public

Gene Ball
Richard Bond*
Bill Buckley
Karla Chambers*
Carl Chambers
Don & Sue Goodhouse

Agency Liaisons/Advisors

Frannie Brindle
Ron Irish
Sheriff Scott Jackson (absent)
Lee Lazaro
Jim Patton
Undersheriff Greg Ridler
Greg Wilson

Bennett Hall
Stephanie Hauge*
David & Janet Johnson*
Chuck & Maureen Kirkpatrick
Rob & Janet Krahmer
Ed Leslie
Matt Mellenthin

County Board of Commissioners

Commissioner Augerot

County Staff

Josh Wheeler
Laurie Starha

Consultant Team

Libby Barg
Bruce Pregeluber
Kelly Laustsen

James & Michele Morse*

Breanna Oberfoell

Gail Parr

Kirk Schlesinger

Linda Standiferd

Sprague Twedt

**Provided comment*

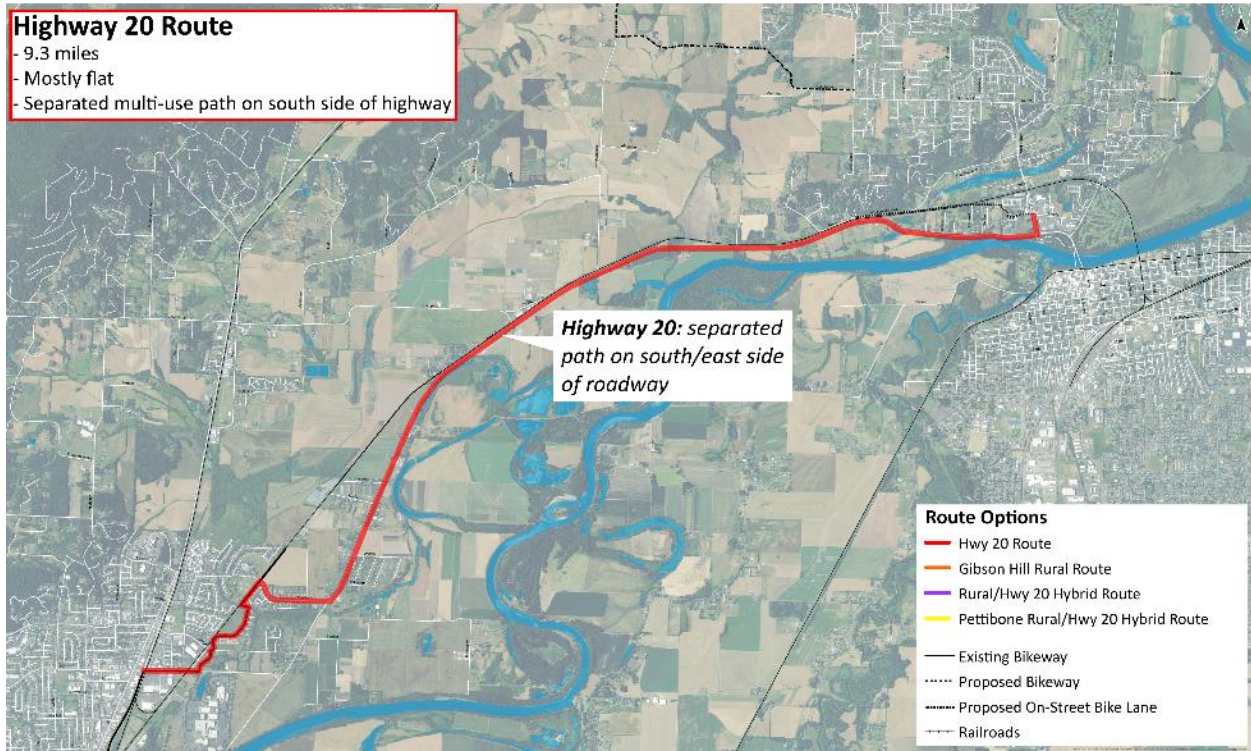
Summary

Advisory Group members considered information on selected route options from the Technical Advisory Committee review. After considering what they had learned about the routes, Advisory Group members selected several variations of the Rural Route option and a separated bikeway path on the east side of Hwy 20 to move forward to the April 5 Community Open House.

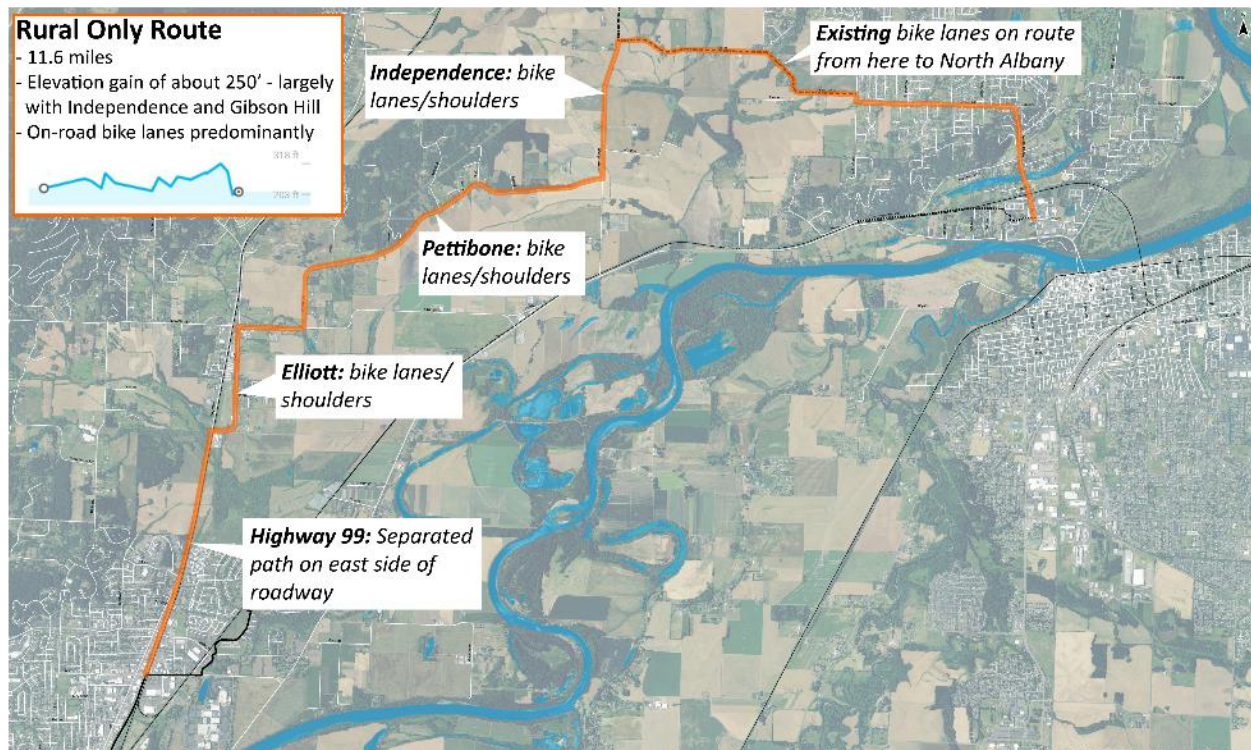
Approximately 20 members of the public attended the meeting, the majority being property owners along Hwy 20 in Albany. They expressed concerns about negative impacts to their river fronting property and their access to Hwy 20. They also highlighted construction and safety issues with developing a separated bikeway path where Hwy 20 is confined.

Conceptual Routes to Move Forward

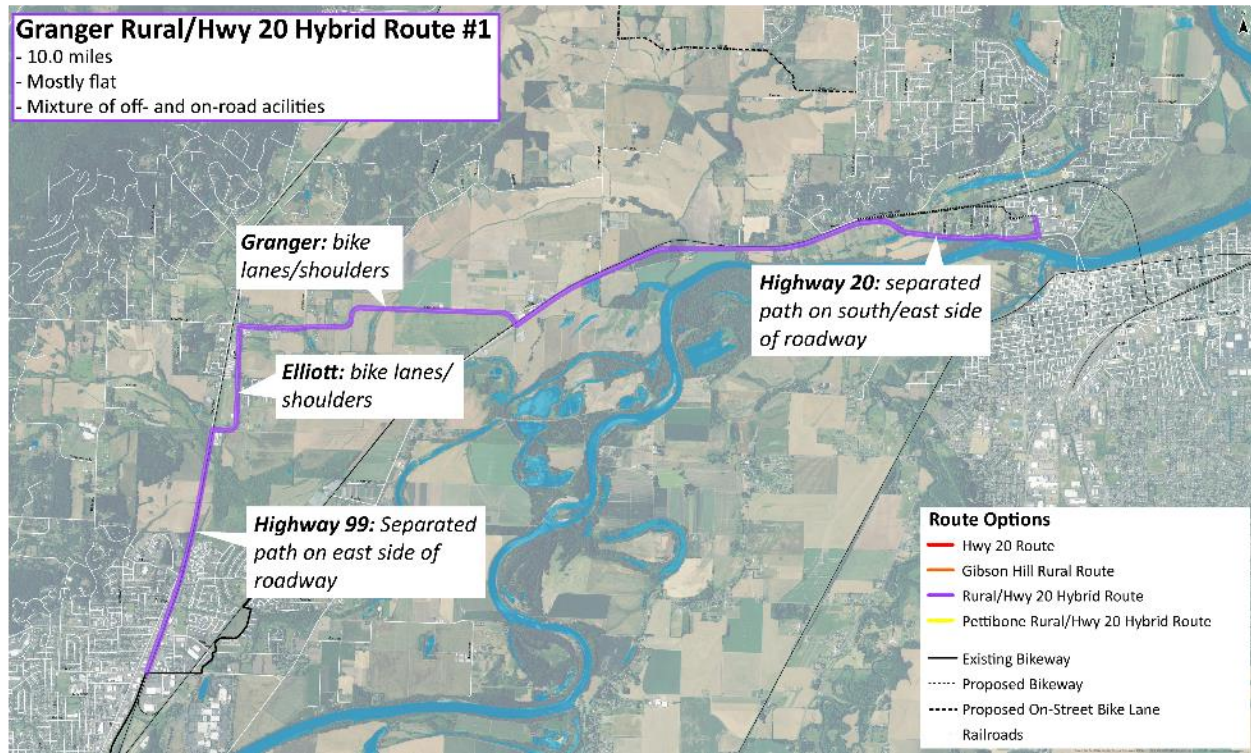
Hwy 20 Route



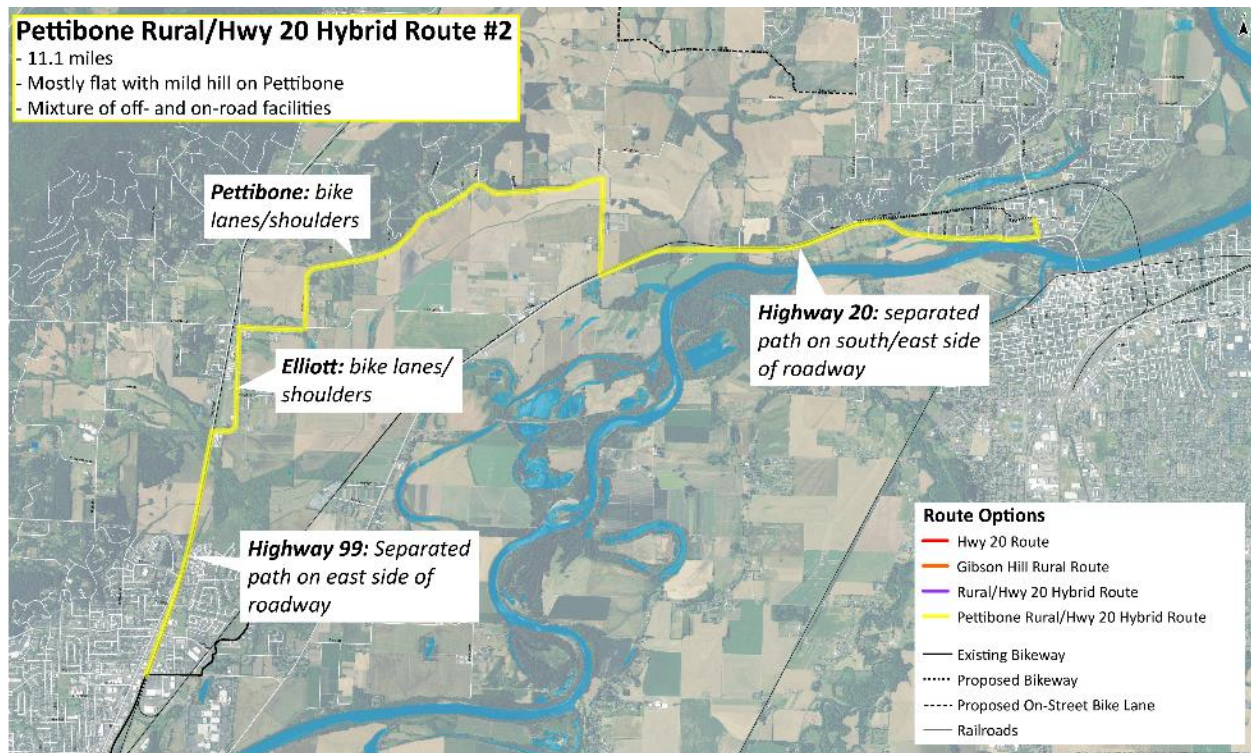
Rural Only Route



Granger Rural/Hwy 20 Hybrid Route #1



Pettibone Rural/Hwy 20 Hybrid Route #2



Public Open House Preview

Advisory Group members asked that routes at the community meeting be presented with relevant information (miles, elevation, driveway crossings, river crossings, land use, etc.). They also suggested that there should be more ways (and space) for participants to provide comments on the conceptual routes.