

Corvallis-Albany Bikeway Advisory Group

Community Open House

April 5, 2017



Welcome!

Agenda

- 5:30 p.m.** Welcome / Open House
- 5:45** Presentation
- 6:10** Public Comment (Sign up)
- 7:00** Dot Exercise
- 7:25** Closing
- 7:30 p.m.** Adjourn

Seven ways to provide input:

1. Electronic polling
2. Public comment
3. Dot exercise
4. Feedback form
5. Online at www.co.benton.or.us/bikeway
6. E-mail publicworks@co.benton.or.us
7. Contact Josh Wheeler at 541-766-6010 or Joshua.wheeler@co.benton.or.us

Benton County Public Works
Corvallis-Albany Bikeway
Community Open House

BIKEWAY

1. What questions and comments do you have about the conceptual routes?

Hwy 20 Route _____

Gibson Hill Rural Route _____

Rural/Hwy 20 Hybrid Route _____

~~_____~~ Rural/Hwy 20 Hybrid Route _____

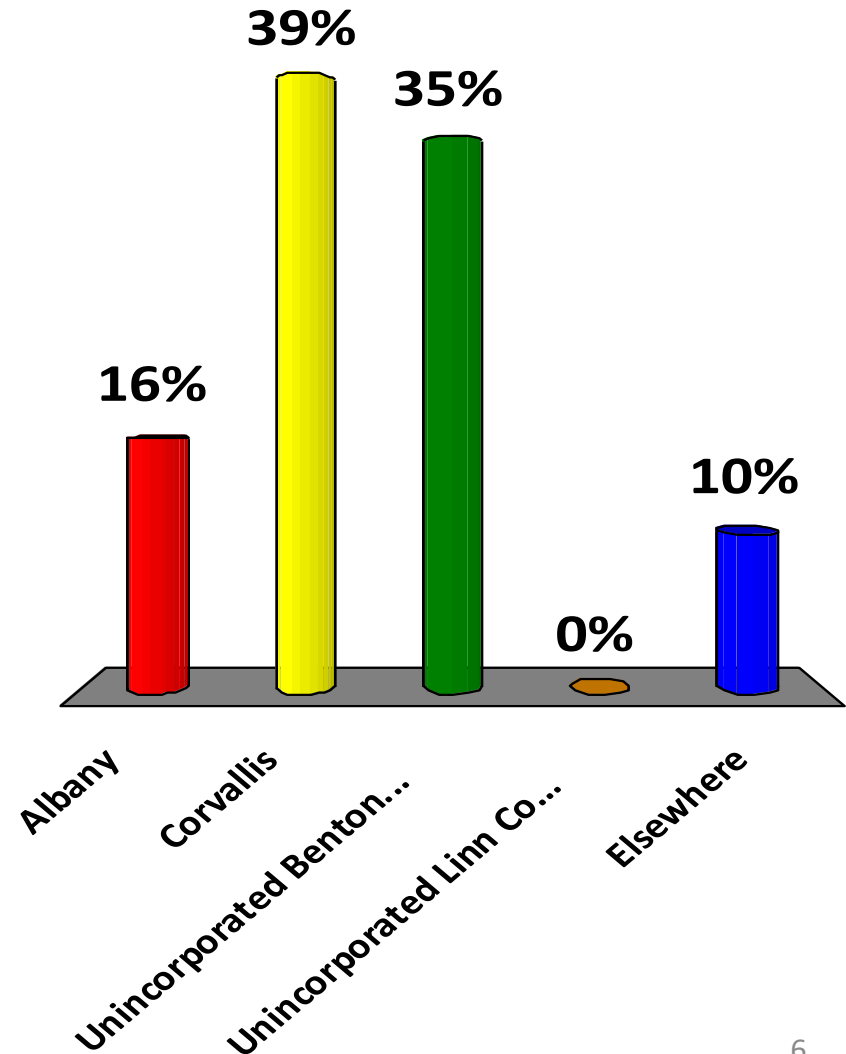
Another comment: _____

Electronic Polling



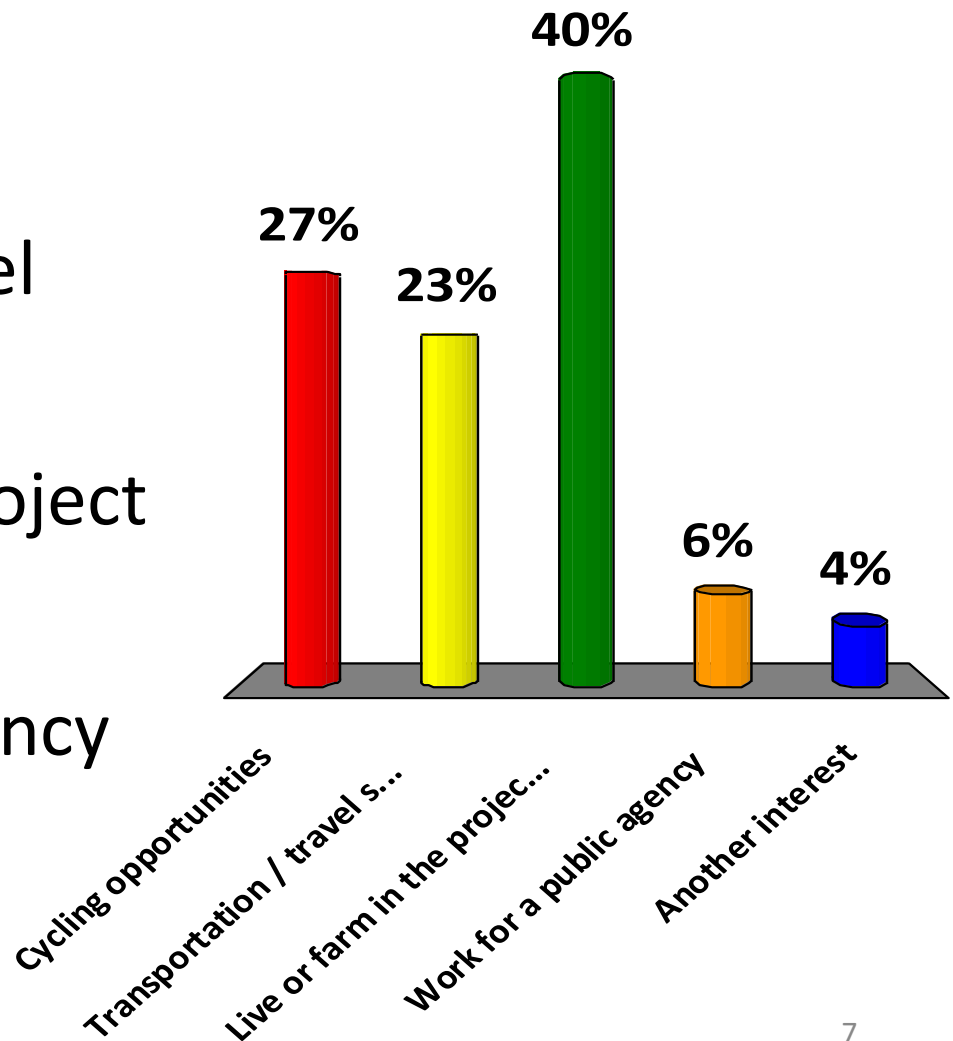
Where do you live?

1. Albany
2. Corvallis
3. Unincorporated Benton County
4. Unincorporated Linn County
5. Elsewhere



What is your main area of interest for the bikeway project?

1. Cycling opportunities
2. Transportation / travel safety on Hwy 20
3. Live or farm in the project area
4. Work for a public agency
5. Another interest



Bikeway Advisory Group Process

Three-step process to broaden public input

Phase 1:

- Listening to the community to determine need and support
- Telephone survey and stakeholder interviews
- **Public open house (Dec 13, 2016)**

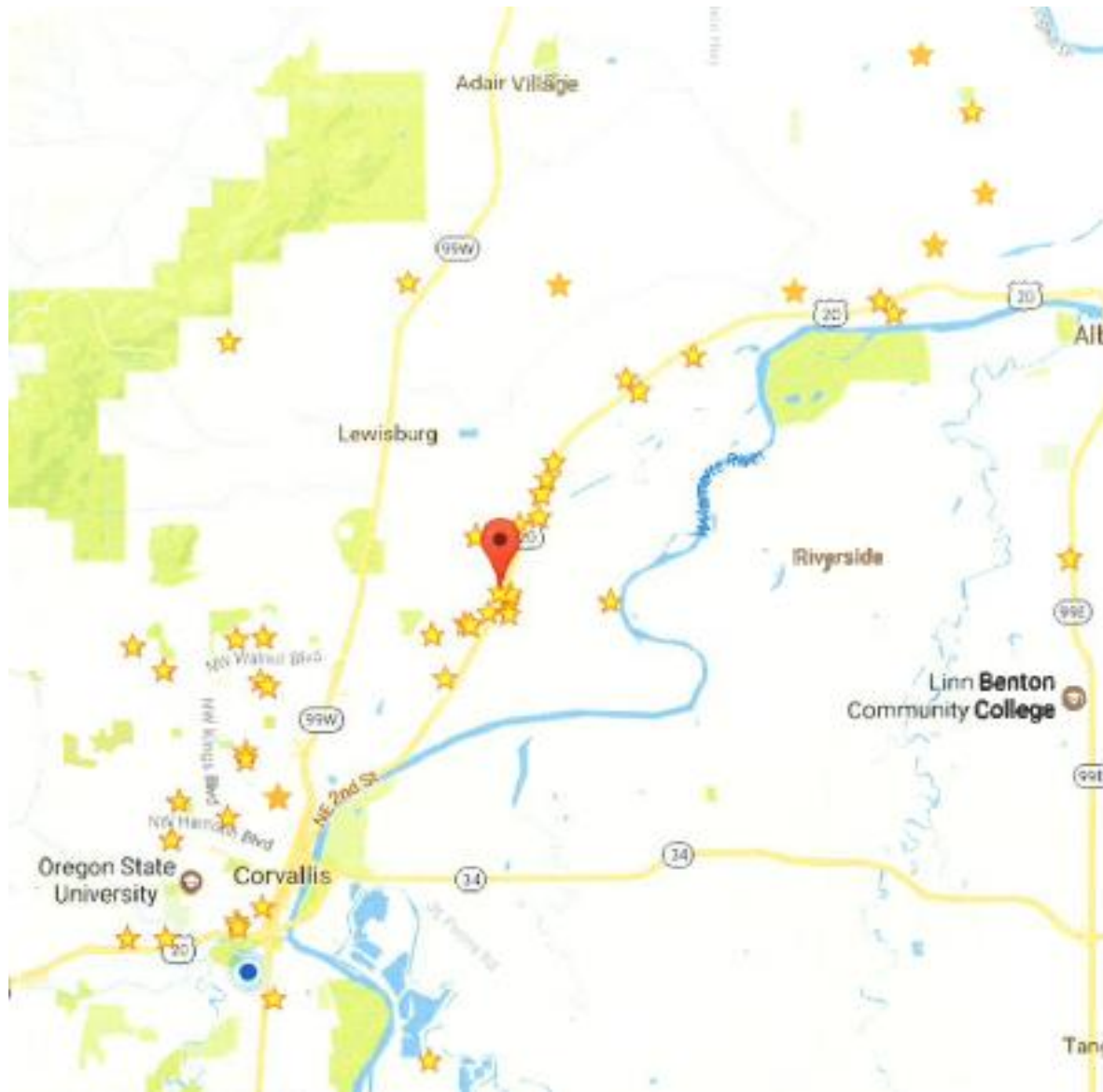
Phase 2:

- Bikeway Advisory Group
- Community invited to help develop route alternatives

Phase 3: Engineering analysis of community accepted routes and more public input



December 13 Public Meeting



- 100+ attendees
- 75% provided comments
- Approximately 3:1 were supportive of a bike path moving to Phase 2.

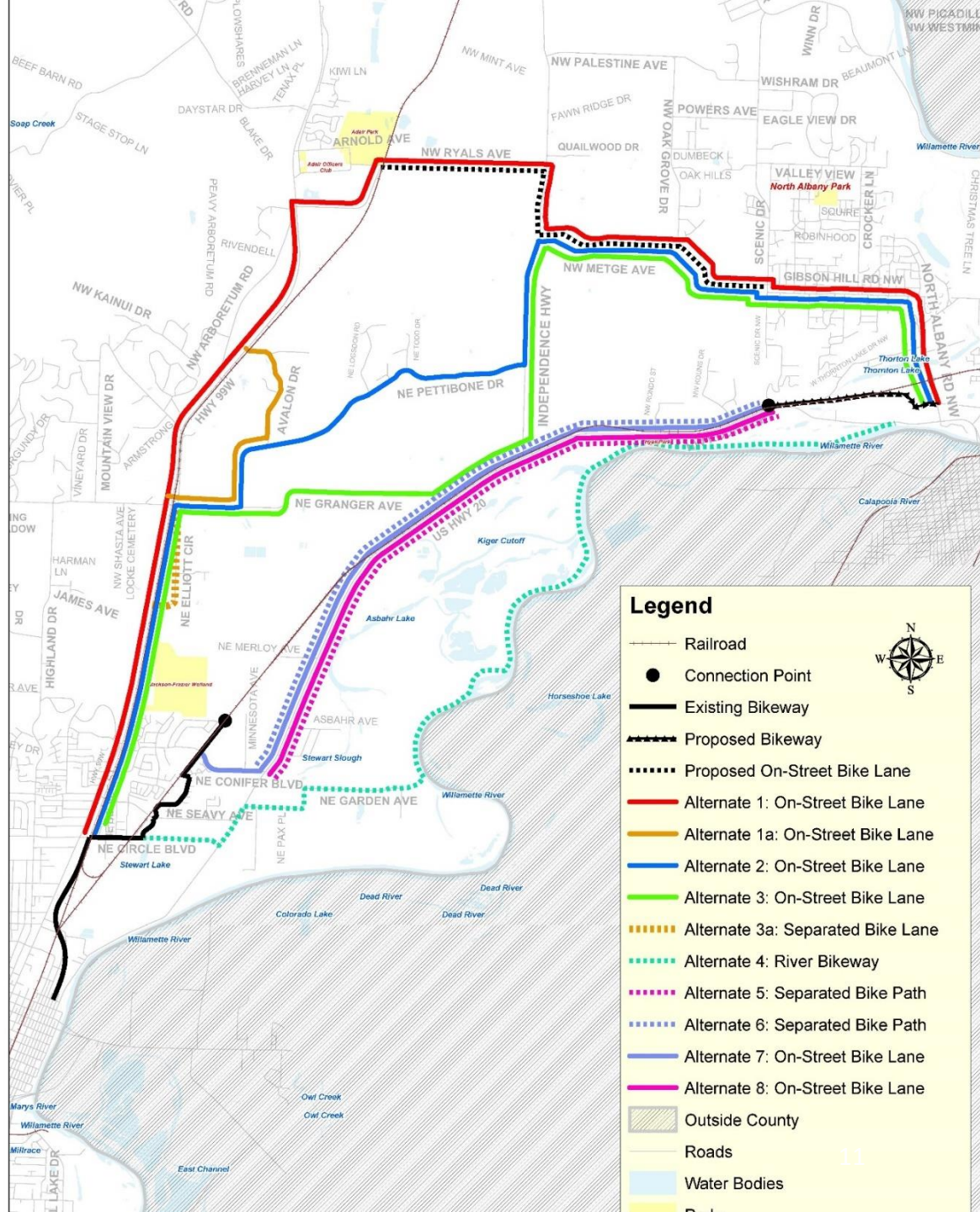
Support: 48

Neutral: 12

Opposed: 16

Bikeway Advisory Group

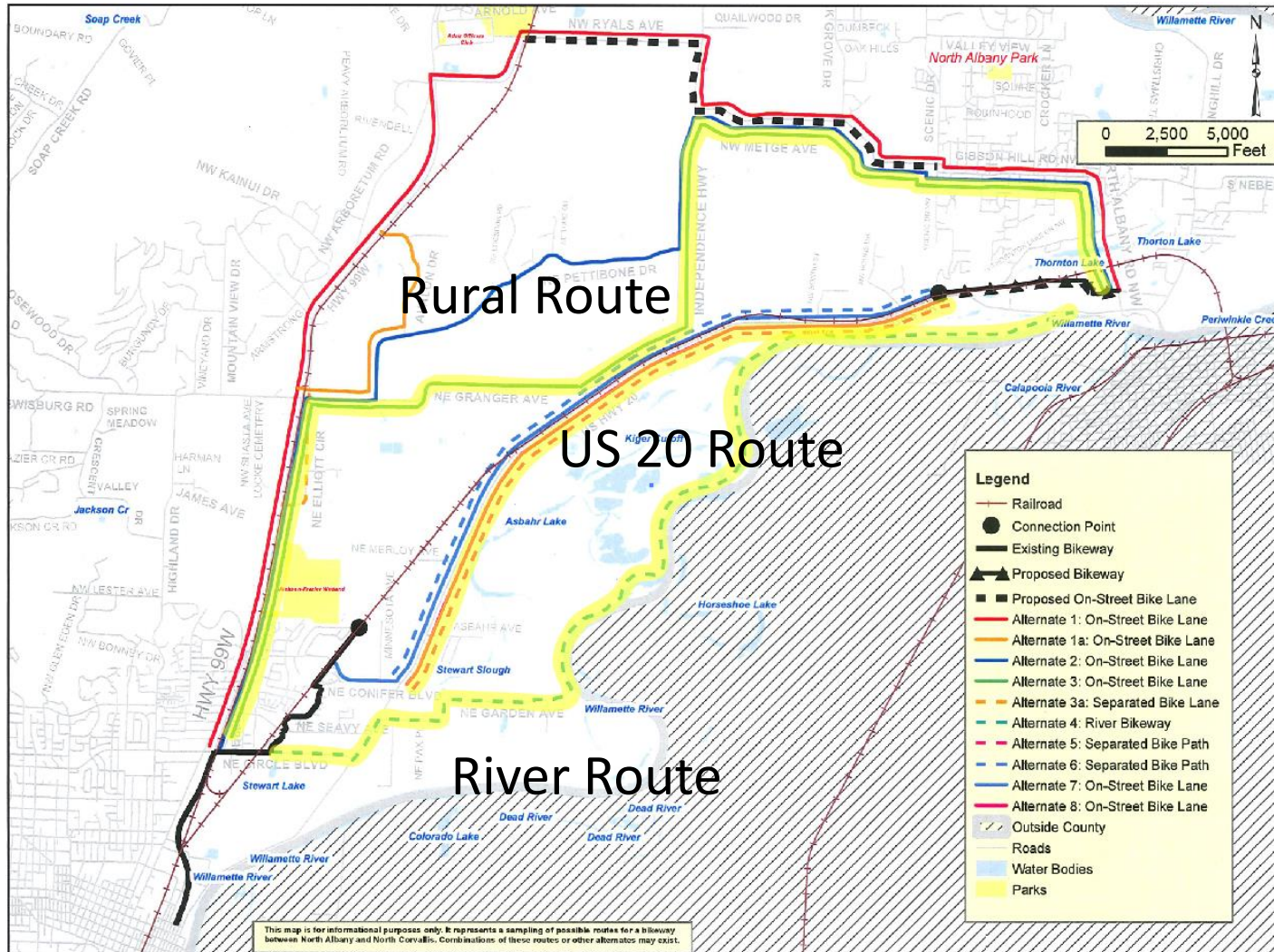
- A community and technical advisory group
- Define bikeway evaluation criteria
- Determine if a viable route exists
- Has met three times
- **Started with 8+ routes**



The Advisory Group's criteria to evaluate options

Evaluation Criteria	
Tier 1	Maximizes traveling safety for all modes (configuration, crossings)
	Connects to destinations (parks, cities, employers, schools, public transit, trailheads, current and future pathways—local and regional)
	Practical for recreational use and commuting (distance and terrain)
	Fits rural character / protects farmland
Tier 2	Minimizes environmental impacts (wetlands, trees, habitat, stormwater runoff)
	Minimizes impacts on neighbors (construction and operation)
	Provides other benefits (maximizes environmental benefits, transportation choices, aesthetics, economic, mental and physical health)
	Allows emergency access; inhibits crime (not secluded, potential to be well used)
	Supports visitor travel / tourism
	Minimizes operation and maintenance resource needs

Advisory Group narrowed choices to three route options



More in-depth review by the Technical Advisory Committee led to a recommendation to the Bikeway Advisory Group to move forward with Hwy 20 and Rural Route options

Evaluation Criteria				
Tier 1	Maximizes traveling safety for all modes (configuration, crossings)	?	?	
	Connects to destinations (parks, cities, employers, schools, public transit, trailheads, current and future pathways—local and regional)			
	Practical for recreational use and commuting (distance and terrain)*	R C	R C	
	Fits rural character / protects farmland**			
Tier 2	Minimizes environmental impacts (wetlands, trees, habitat, stormwater runoff)			
	Minimizes impacts on neighbors (construction and operation)	?	?	
	Provides other benefits (maximizes environmental benefits, transportation choices, aesthetics, economic, mental and physical health)			
	Allows emergency access; inhibits crime (not secluded, potential to be well used)			
	Supports visitor travel / tourism	?	?	
	Minimizes operation and maintenance resource needs***			
	Overall	3	5.5	0.5
	Rural	Hwy 20	0	River

River Route Sidelined

*Consider if pathway is good for recreation or for commuting during evaluation.

**Consider how farming activities impact bikeway users.

***Order of magnitude construction cost to be added to evaluation criteria after routes are further refined.

Bikeway Advisory Group asked for four routes to be further evaluated: Hwy 20 and Rural Only Options—plus two hybrids.

Route Options



Highway 20 Route



Rural Only Route

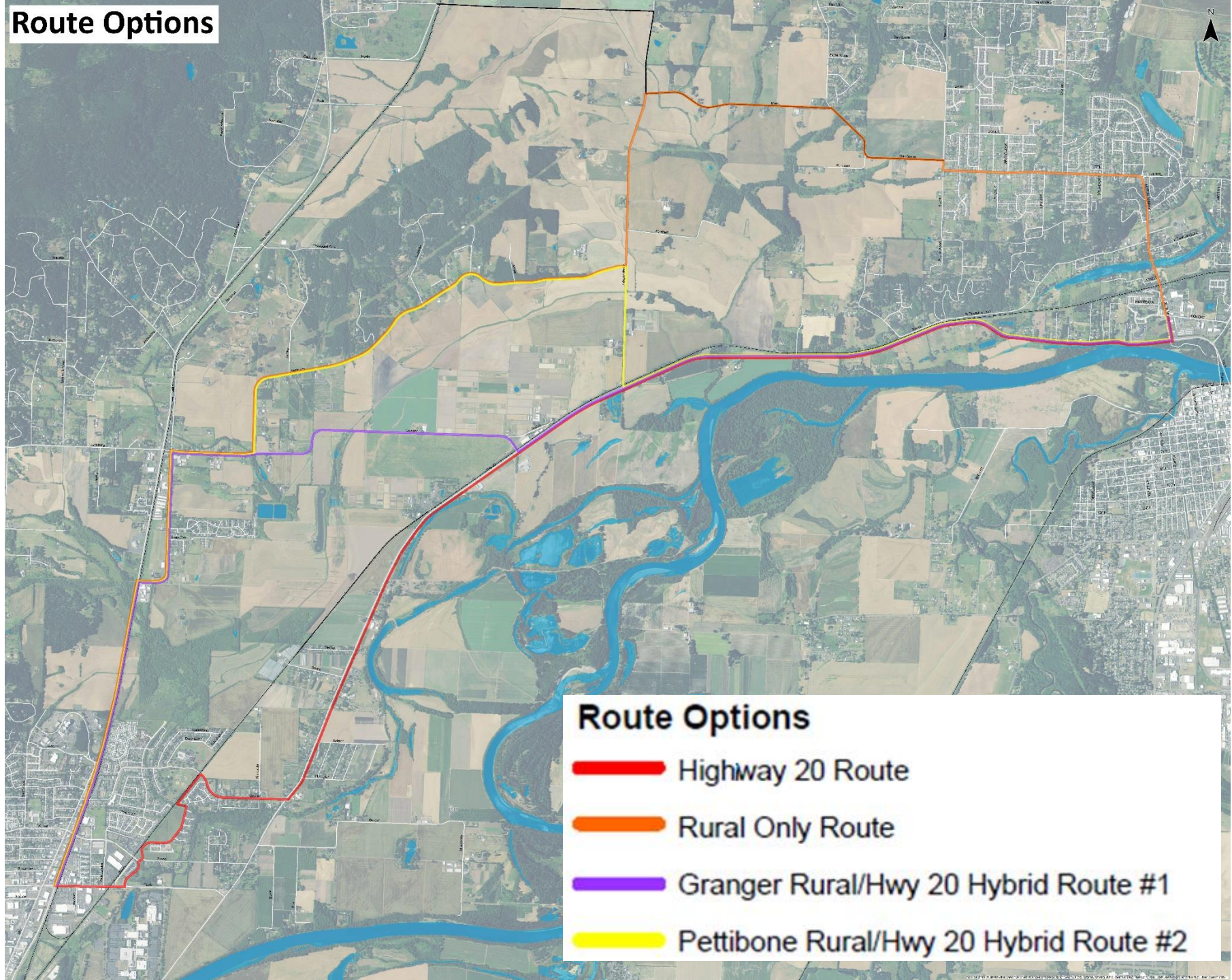


Granger Rural/Hwy 20 Hybrid Route #1







Pettibone Rural/Hwy 20 Hybrid Route #2

Route Options



Route Options

-  Highway 20 Route
-  Rural Only Route
-  Granger Rural/Hwy 20 Hybrid Route #1
-  Pettibone Rural/Hwy 20 Hybrid Route #2

Conceptual Routes—Overview

Bikeway Basics

- Crossings – minimize, good quality
- Access – frequent and convenient
- Security – illumination and sight distance
- Maintenance – inspection, sweeping, repairs

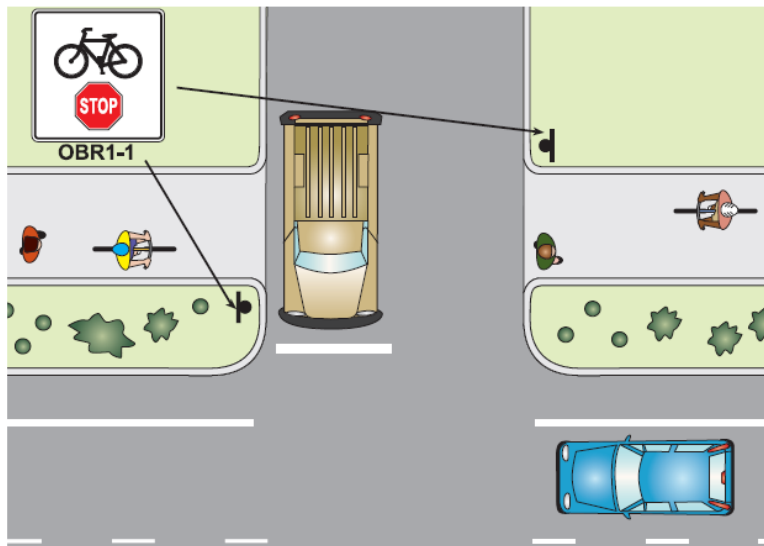


Figure 7-26: Appropriate use of sign OBR1-1 (or OBR1-2)

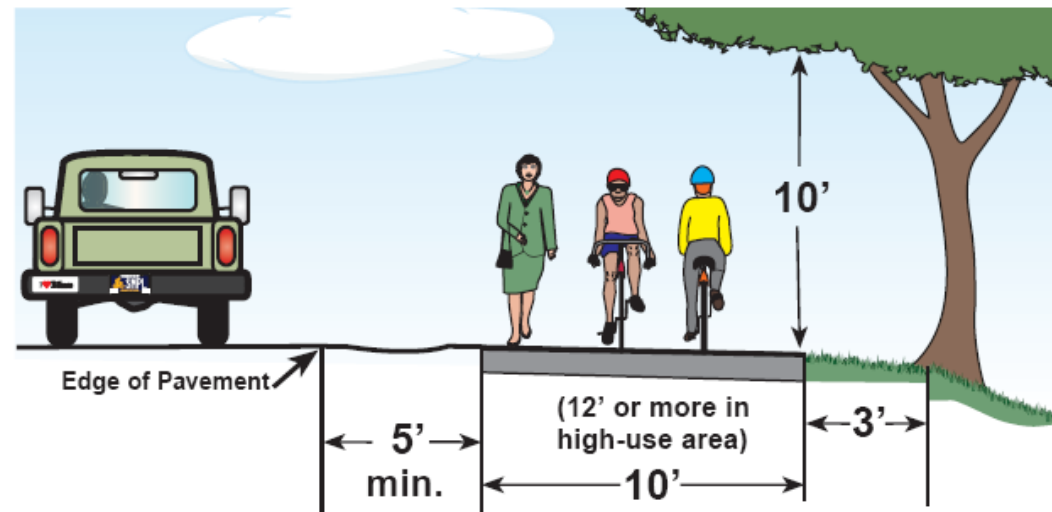


Figure 7-3: Suggested shared use path dimensions

Crossings

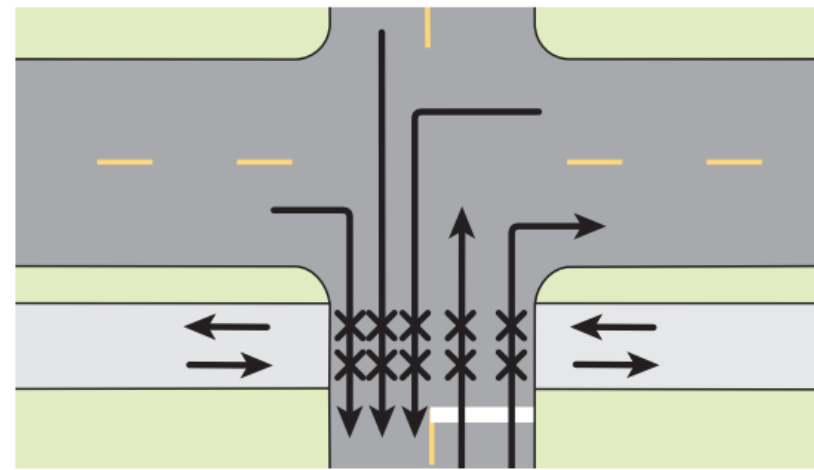
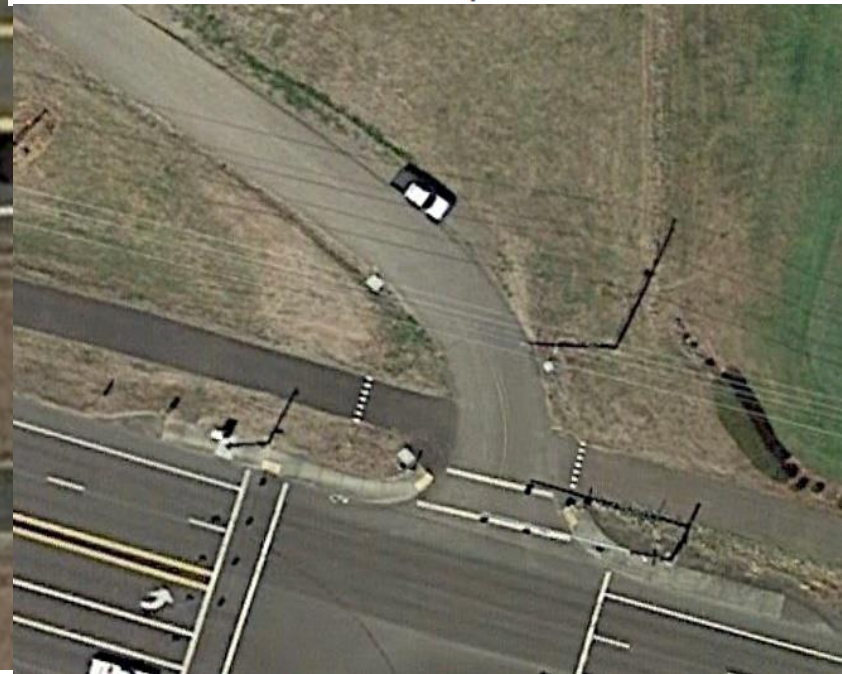
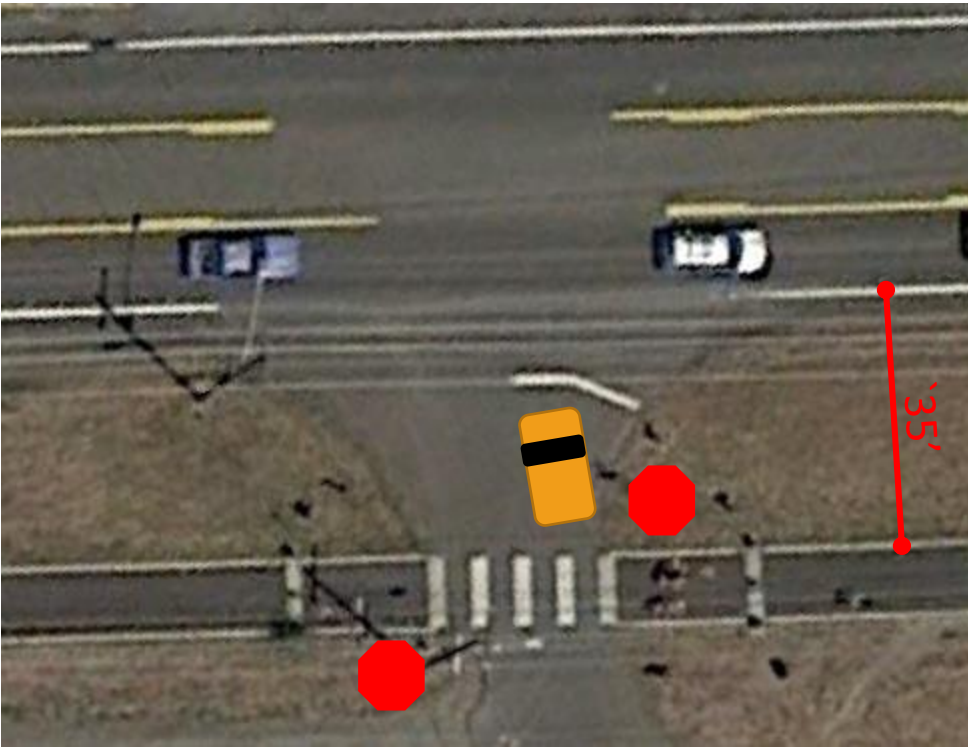


Figure 7-2: Intersection and driveway conflicts at path



Off-road bikeway



On-road bike lane



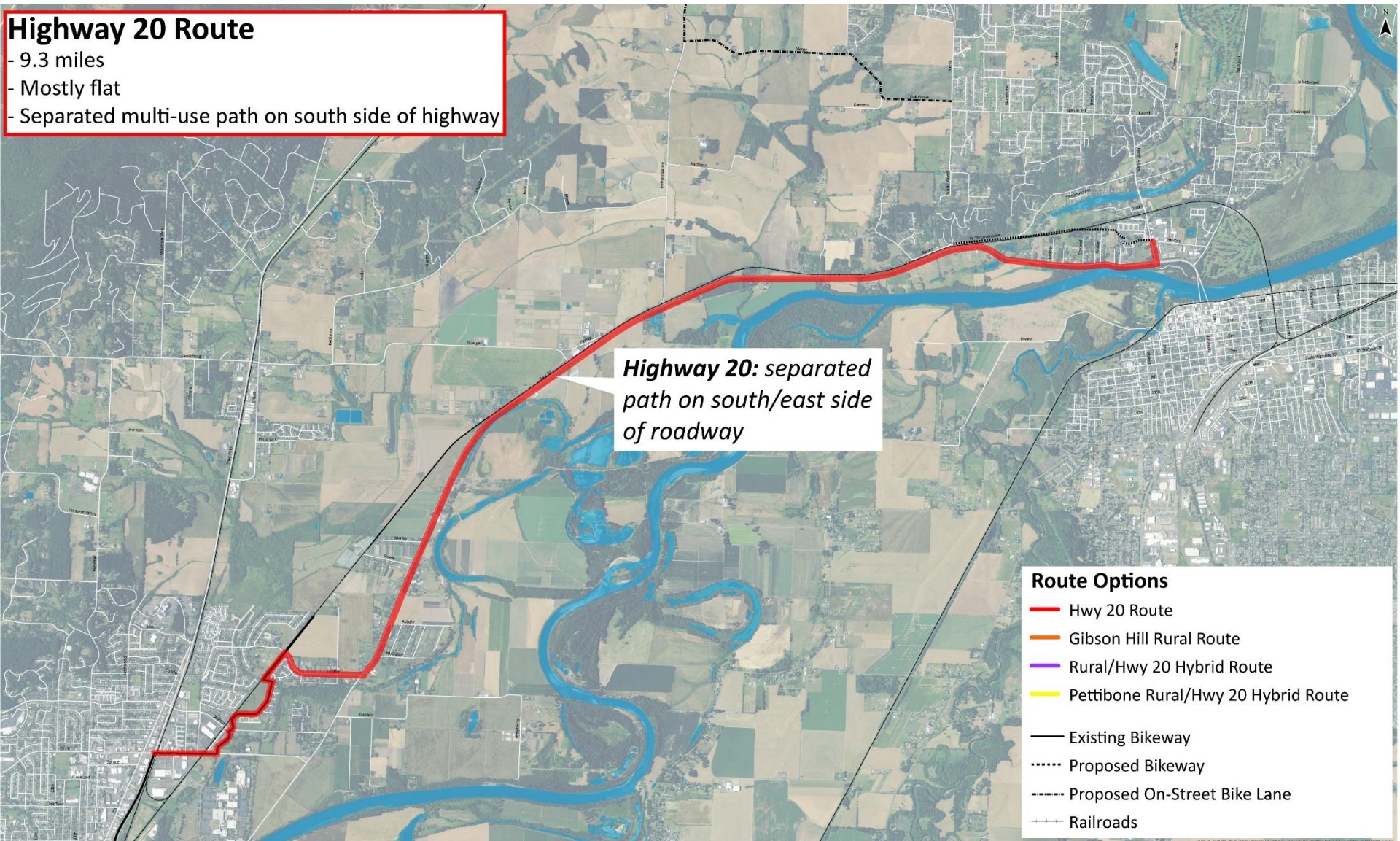
Highway 20 Route

Highway 20 Route
- 9.3 miles
- Mostly flat
- Separated multi-use path on south side of highway

Highway 20: separated path on south/east side of roadway

Route Options

- Hwy 20 Route
- Gibson Hill Rural Route
- Rural/Hwy 20 Hybrid Route
- Pettibone Rural/Hwy 20 Hybrid Route
- Existing Bikeway
- ⋯ Proposed Bikeway
- - - Proposed On-Street Bike Lane
- Railroads



Rural Only Route

Rural Only Route

- 11.6 miles
- Elevation gain of about 250' - largely with Independence and Gibson Hill
- On-road bike lanes predominantly



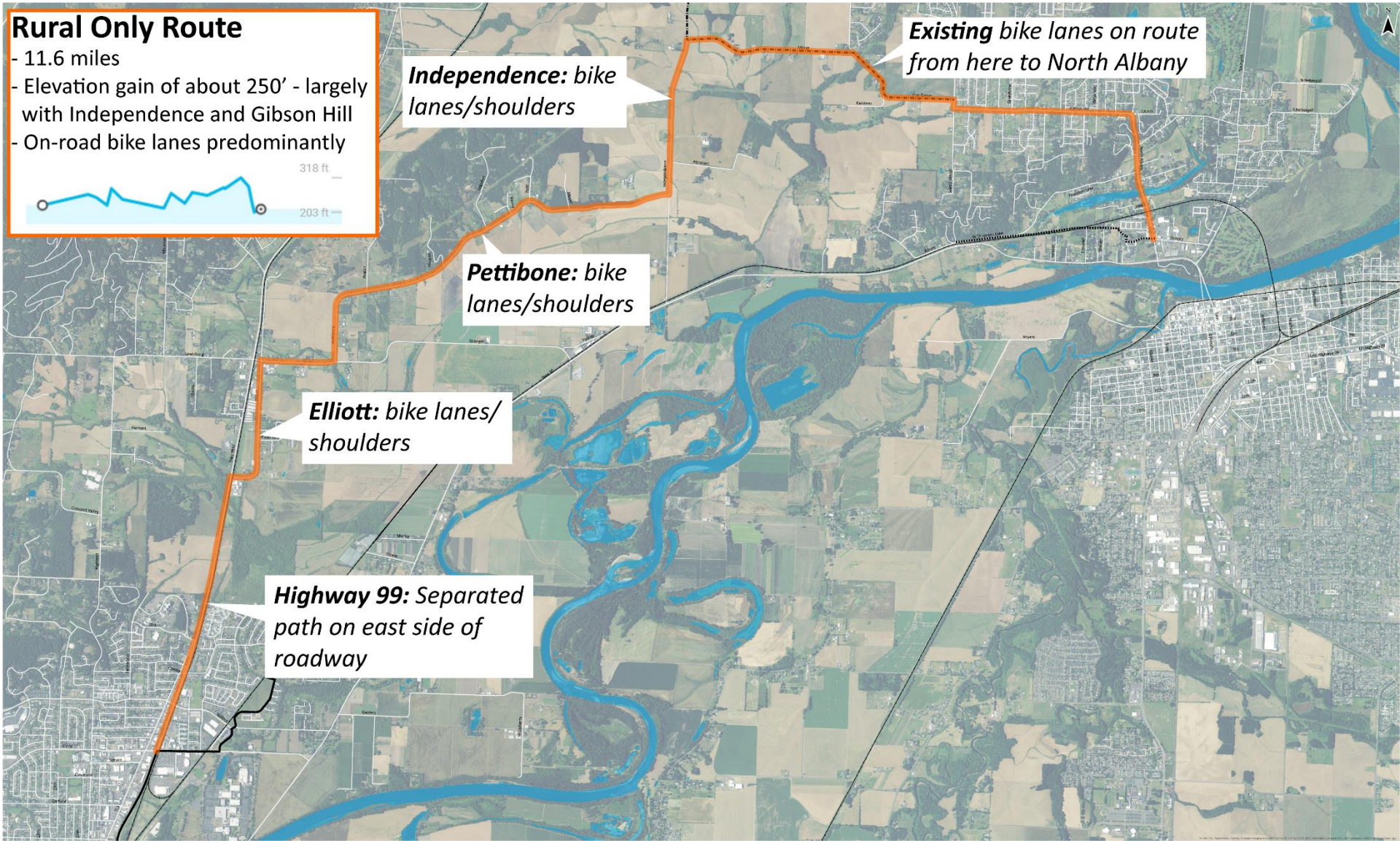
Independence: bike lanes/shoulders

Pettibone: bike lanes/shoulders

Elliott: bike lanes/shoulders

Highway 99: Separated path on east side of roadway

Existing bike lanes on route from here to North Albany



Granger Rural/Hwy 20 Hybrid Route #1

Granger Rural/Hwy 20 Hybrid Route #1

- 10.0 miles
- Mostly flat
- Mixture of off- and on-road facilities









Granger: bike lanes/shoulders

Elliott: bike lanes/shoulders

Highway 99: Separated path on east side of roadway

Highway 20: separated path on south/east side of roadway

Route Options

-  Hwy 20 Route
-  Gibson Hill Rural Route
-  Rural/Hwy 20 Hybrid Route
-  Pettibone Rural/Hwy 20 Hybrid Route
-  Existing Bikeway
-  Proposed Bikeway
-  Proposed On-Street Bike Lane
-  Railroads

Pettibone Rural/Hwy 20 Hybrid Route #2

Pettibone Rural/Hwy 20 Hybrid Route #2

- 11.1 miles
- Mostly flat with mild hill on Pettibone
- Mixture of off- and on-road facilities

Pettibone: bike lanes/shoulders

Elliott: bike lanes/shoulders

Highway 99: Separated path on east side of roadway

Highway 20: separated path on south/east side of roadway

Route Options

- Hwy 20 Route
- Gibson Hill Rural Route
- Rural/Hwy 20 Hybrid Route
- Pettibone Rural/Hwy 20 Hybrid Route
- Existing Bikeway
- Proposed Bikeway
- Proposed On-Street Bike Lane
- Railroads

On a scale of (1) least preferred option to (7) most preferred option, how would you rank the Highway 20 Route?

26% 1. Least preferred

6% 2. ...

4% 3. ...

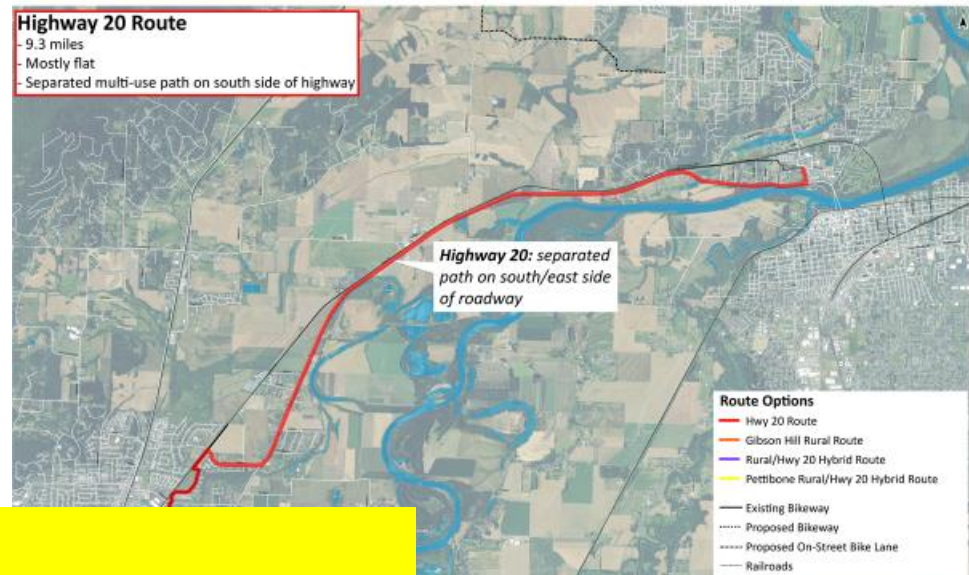
6% 4. ...

4% 5. ...

13% 6. ...

40% 7. Most preferred

Highway 20 Route



Mean = 4.57

On a scale of (1) least preferred option to (7) most preferred option, how would you rank the Rural Only Route?

45% 1. Least preferred

6% 2. ...

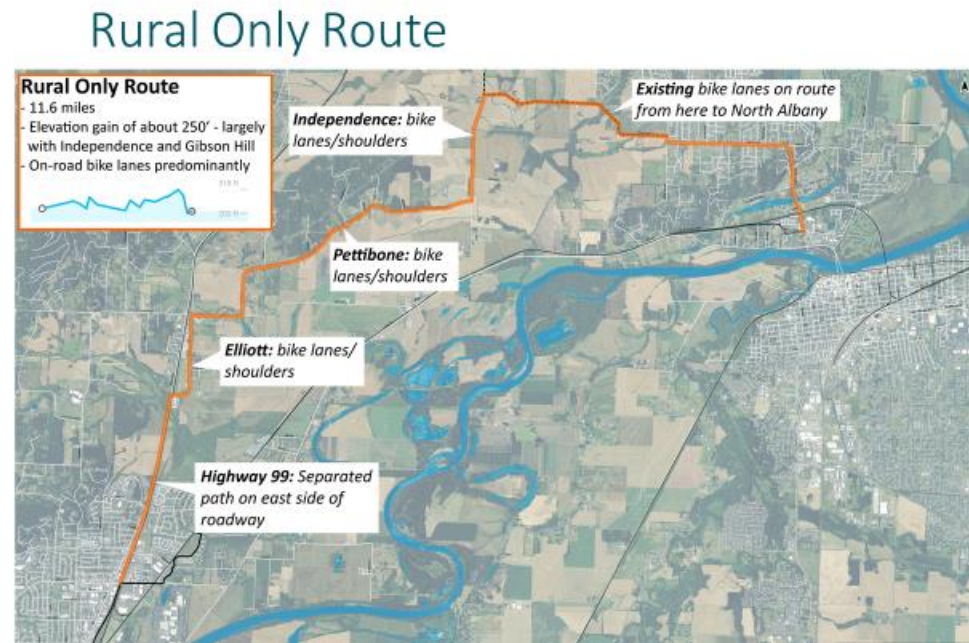
9% 3. ...

11% 4. ...

0% 5. ...

4% 6. ...

26% 7. Most preferred



Mean = 3.30

On a scale of (1) least preferred option to (7) most preferred option, how would you rank the Granger Rural/Hwy 20 Hybrid Route #1?

36% 1. Least preferred

7% 2. ...

19% 3. ...

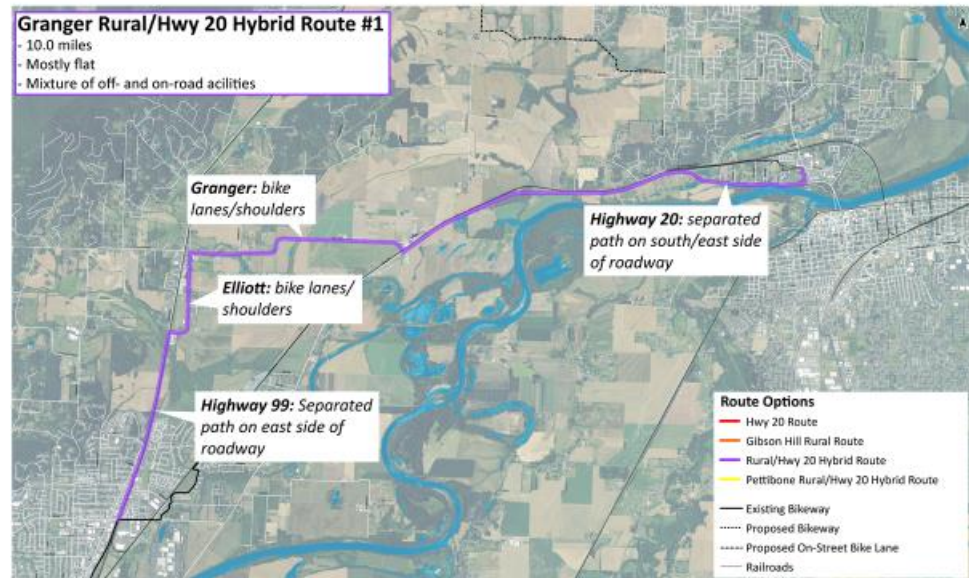
10% 4. ...

12% 5. ...

7% 6. ...

10% 7. Most preferred

Granger Rural/Hwy 20 Hybrid Route #1



Mean = 3.14

On a scale of (1) least preferred option to (7) most preferred option, how would you rank the Pettibone Rural/Hwy 20 Hybrid Route #2?

33% 1. Least preferred

16% 2. ...

9% 3. ...

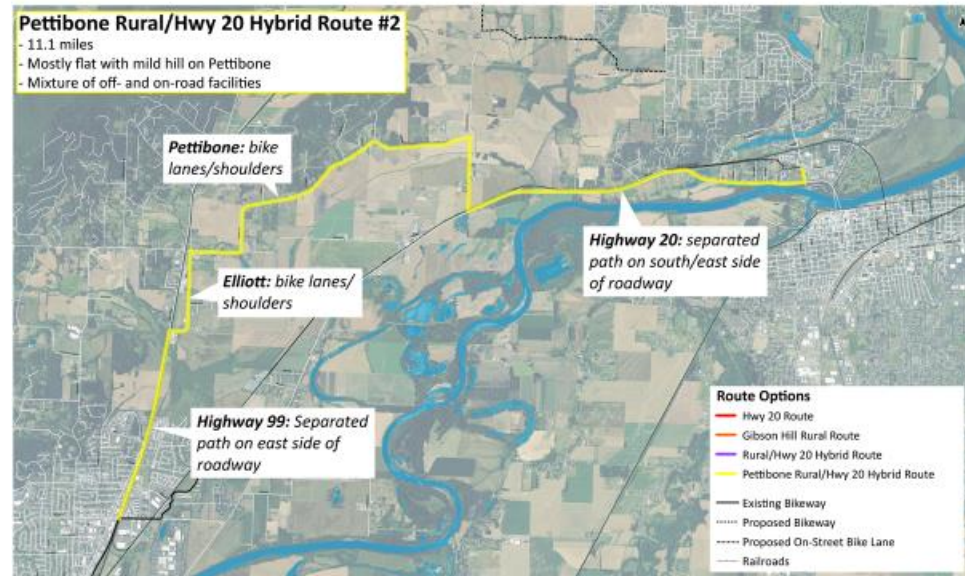
12% 4. ...

12% 5. ...

14% 6. ...

5% 7. Most preferred

Pettibone Rural/Hwy 20 Hybrid Route #2



Mean = 3.14

Public Comment

- **Public comment continues until 7:00 p.m.**
- **Names will be called** from the sign-in sheet.
- **Each person gets 2 minutes** to comment.
- **Speakers will be given a 30-second warning** to finish their comments.
- **Comments are being recorded** for future review.

Dot Exercise

- **Dot exercise starts at 7 p.m.** (please complete the exercise earlier if you are not planning to stay)
- **Visit any table.** They all have the same map showing four route options.
- **Place dots on your top choices—or put both dots on your favorite.**
- **Use feedback forms on the tables to provide more comments.**
- Comment box located at the main doors to this room.

Next Steps

Wednesday, April 5, 5:30-7:30 p.m.

Benton County Sunset Building

Community Open House

Wednesday, April 12, 1:00-3:00 p.m.

Avery Building

**Technical Advisory Committee
Meeting #2**

Tuesday, April 25, 12:00-2:00 p.m.

Corvallis-Benton County Public Library

**Bikeway Advisory Group Meeting #4
Select Recommended Route**

Tuesday, May 16, 9:00-11:00 a.m.

Board Meeting Room

Board of Commissioners Work Session

Tuesday, June 6, 12:00 p.m.

Board Meeting Room

**Board of Commissioners Meeting
(Consider Phase 3)**

Thank you for attending!

1. Feedback form
2. Online at www.co.benton.or.us/bikeway
3. E-mail publicworks@co.benton.or.us
4. Contact Josh Wheeler at 541-766-6010 or Joshua.wheeler@co.benton.or.us

Comment box located at the main doors to this room.