

**Corvallis—Albany Bikeway Advisory Group**  
**Meeting #2 Select Preliminary Routes**

February 22, 2017



# Agenda

- Review / Adopt Updated Evaluation Criteria
- Route Areas
- Evaluate Routes / Dot Exercise
- Advisory Group Discussion
  - Can any routes be sidelined?
  - Which routes should be further studied?  
*(Goal ≈ 5 routes)*
  - What ideas should be documented and sent to the Transportation System Plan Update team?
- Next Steps / Public Comment

# Review / Adopt Updated Evaluation Criteria

Evaluation Criteria	Appropriateness Ranking
<b>Tier 1</b>	
<ul style="list-style-type: none"> <li>▪ <b>Maximizes traveling safety for all modes</b> (configuration, crossings)</li> </ul>	<b>6.6</b>
<ul style="list-style-type: none"> <li>▪ <b>Connects to destinations</b> (parks, cities, employers, schools, public transit, trailheads, current and future pathways—local and regional)</li> </ul>	<b>6.4</b>
<ul style="list-style-type: none"> <li>▪ <b>Practical for recreational use and commuting</b> (distance and terrain)*</li> </ul>	<b>6.4</b>
<ul style="list-style-type: none"> <li>▪ <b>Fits rural character / protects farmland**</b></li> </ul>	<b>6.0</b>
<b>Tier 2</b>	
<ul style="list-style-type: none"> <li>▪ <b>Minimizes environmental impacts</b> (wetlands, trees, habitat, stormwater runoff)</li> </ul>	<b>5.8</b>
<ul style="list-style-type: none"> <li>▪ <b>Minimizes impacts on neighbors</b> (construction and operation)</li> </ul>	<b>5.8</b>
<ul style="list-style-type: none"> <li>▪ <b>Provides other benefits</b> (maximizes environmental benefits, transportation choices, aesthetics, economic, mental and physical health)</li> </ul>	<b>5.8</b>
<ul style="list-style-type: none"> <li>▪ <b>Allows emergency access; inhibits crime</b> (not secluded, potential to be well used)</li> </ul>	<b>5.7</b>
<ul style="list-style-type: none"> <li>▪ <b>Supports visitor travel / tourism</b></li> </ul>	<b>5.3</b>
<ul style="list-style-type: none"> <li>▪ <b>Minimizes operation and maintenance resource needs***</b></li> </ul>	<b>5.2</b>

# Minto-Brown Island Park Trails

- 11 miles
- Asphalt trail
- Located in Willamette River seasonal flood areas
- Floods most winters
- City of Salem installs “high water” signage and maintains/replaces damaged paths





# Highway 26 Bike Path

- 2.3 miles
- Paved commuter route in west Portland
- Pair of trail segments in the Sylvan-Highlands neighborhood are separated by a short on-road connection
- Two public schools lie adjacent to the route



# Willamette Valley Scenic Bikeway

- 130+ miles
- Country back roads and dedicated bike paths
- 18,700 rides (2014)





# ODOT's guide linked to Scenic Bikeway website



## THE ROAD LESS TRAVELED

Heading out for a scenic ride? Here are some safety tips before you go rural:

**Plan your trip** and research your route to make sure it's bike-friendly and within your endurance limits.

**Gear up:** check your tires, chain, brakes and light batteries. And don't forget the flat repair kit.

**Watch your back** with rear-view mirrors and frequent shoulder checks – especially prior to cresting a hill or entering a curve.

**Be predictable:** ride in a straight line, no swerving or weaving, and use clear hand signals.

**Stay on the straight and narrow:** if moving slower than the speed of traffic, ride single file and closer to the shoulder.

**Watch for critters** (including unleashed dogs!) in wooded areas and farming communities.

**Think fast!** Open country roads often mean faster speeds, and motorists may not expect bicyclists on the roadway. So watch out and keep your cool.

**Don't be left in the dark.** Rural roads lack the ambient light of urban areas, so drivers may not see you. Be prepared to ride at night with lights and reflectors – or plan to finish your ride before nightfall.

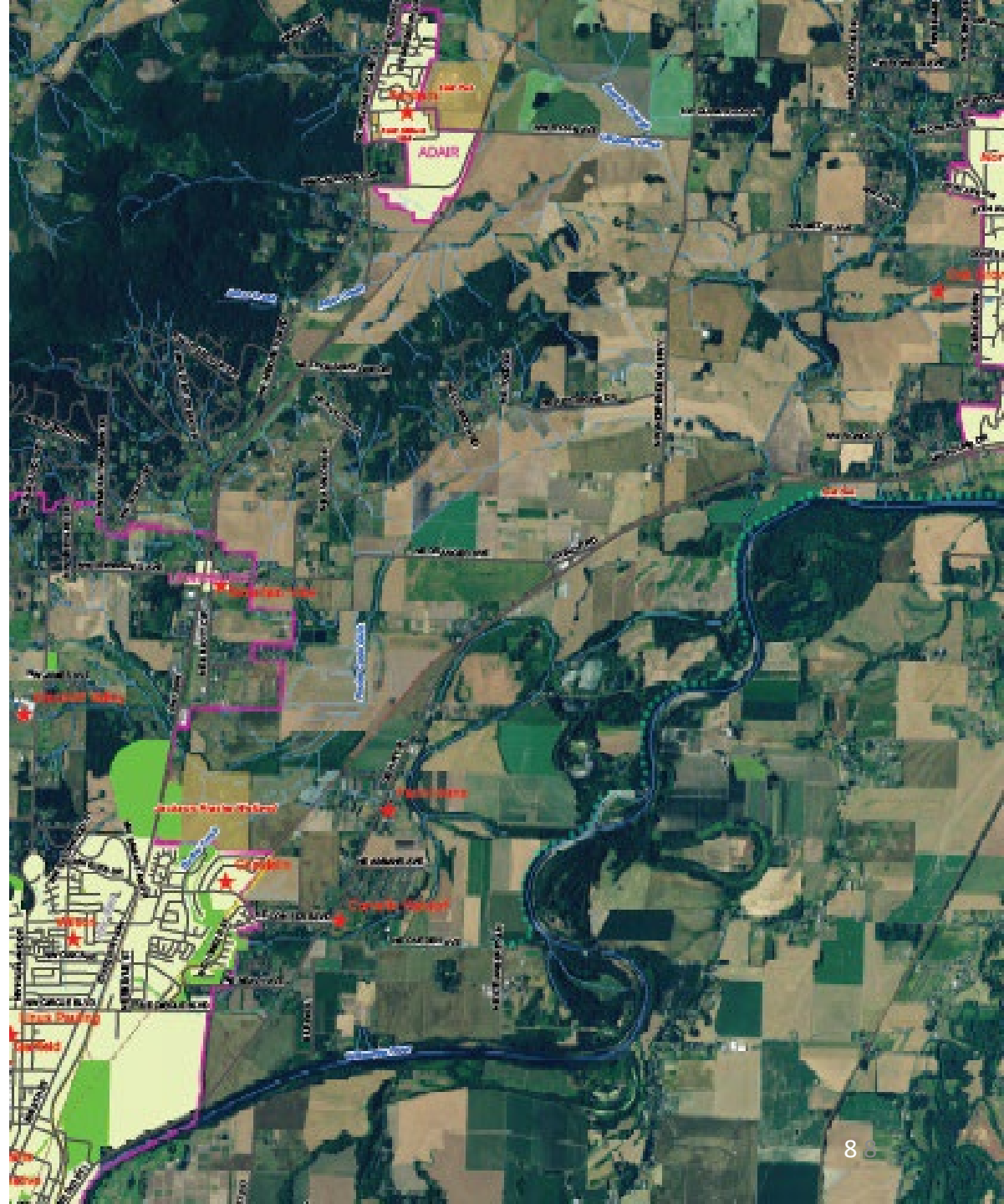
*tip*

When no bike lane is present, you have the right to ride in the roadway.



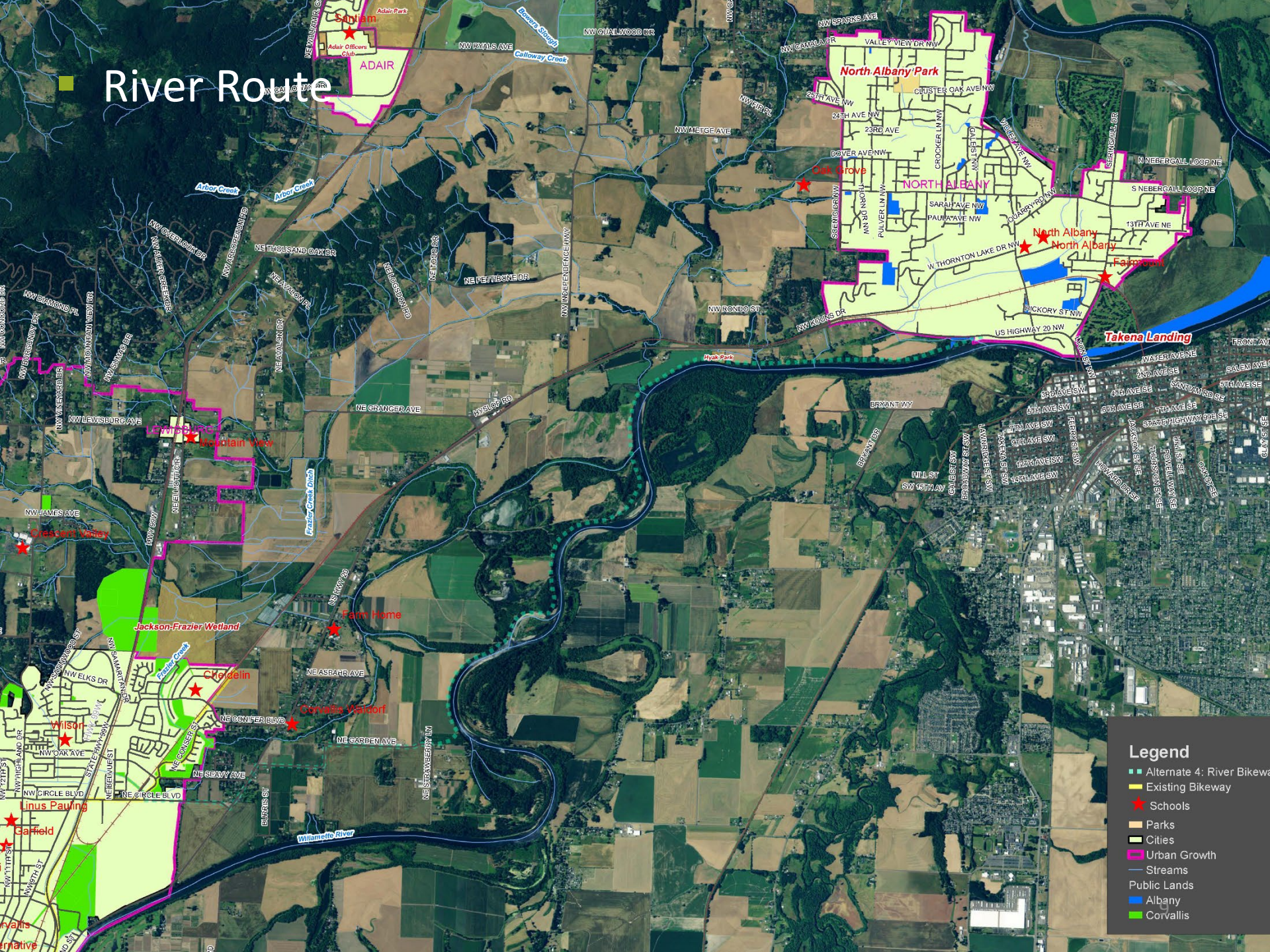
# Route Areas Overviews

- River Route
- Hwy 20 Routes
- Rural Routes





# River Route

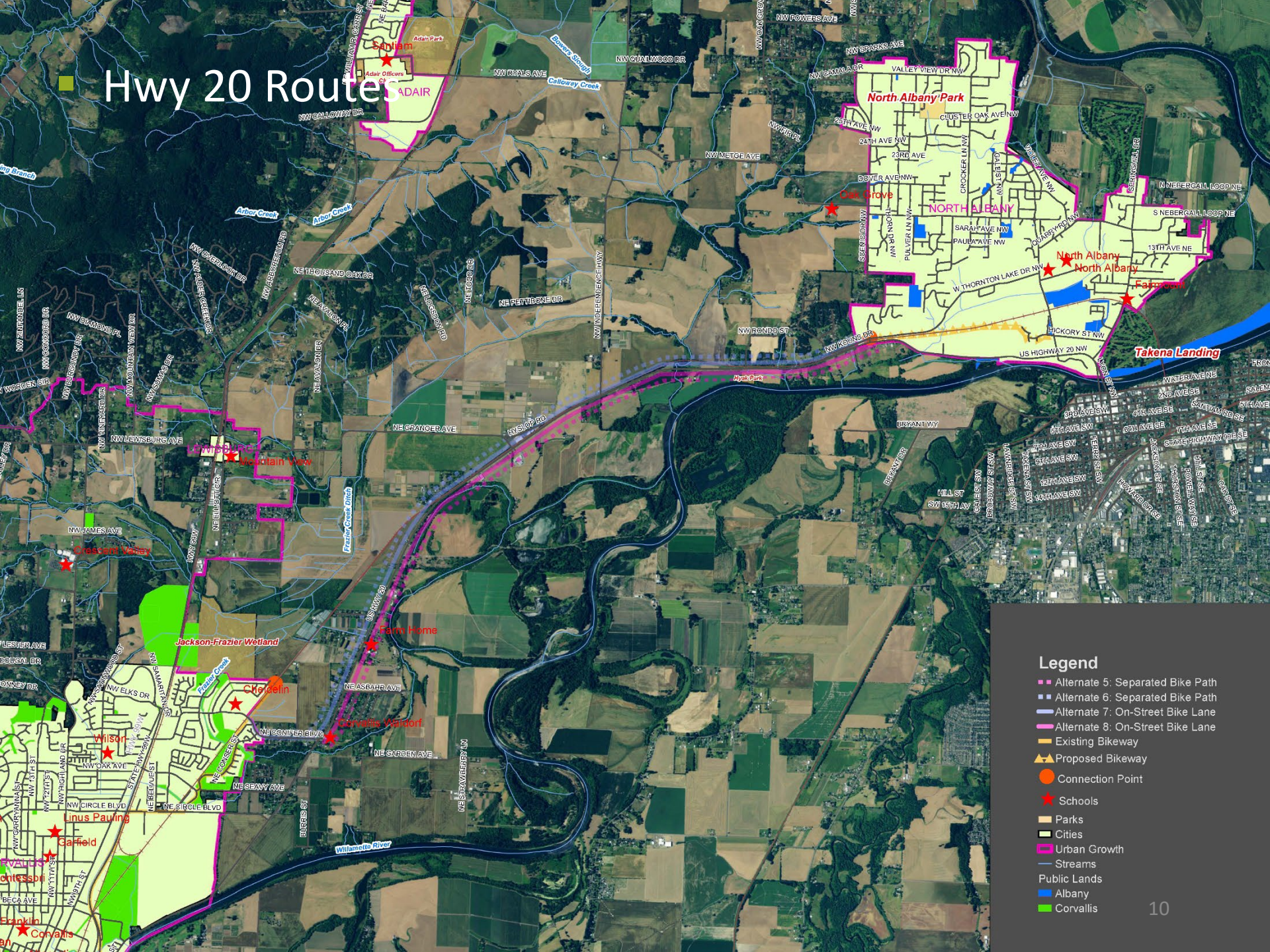


## Legend

- Alternate 4: River Bikeway
- Existing Bikeway
- ★ Schools
- Parks
- Cities
- Urban Growth
- Streams
- Public Lands
- Albany
- Corvallis



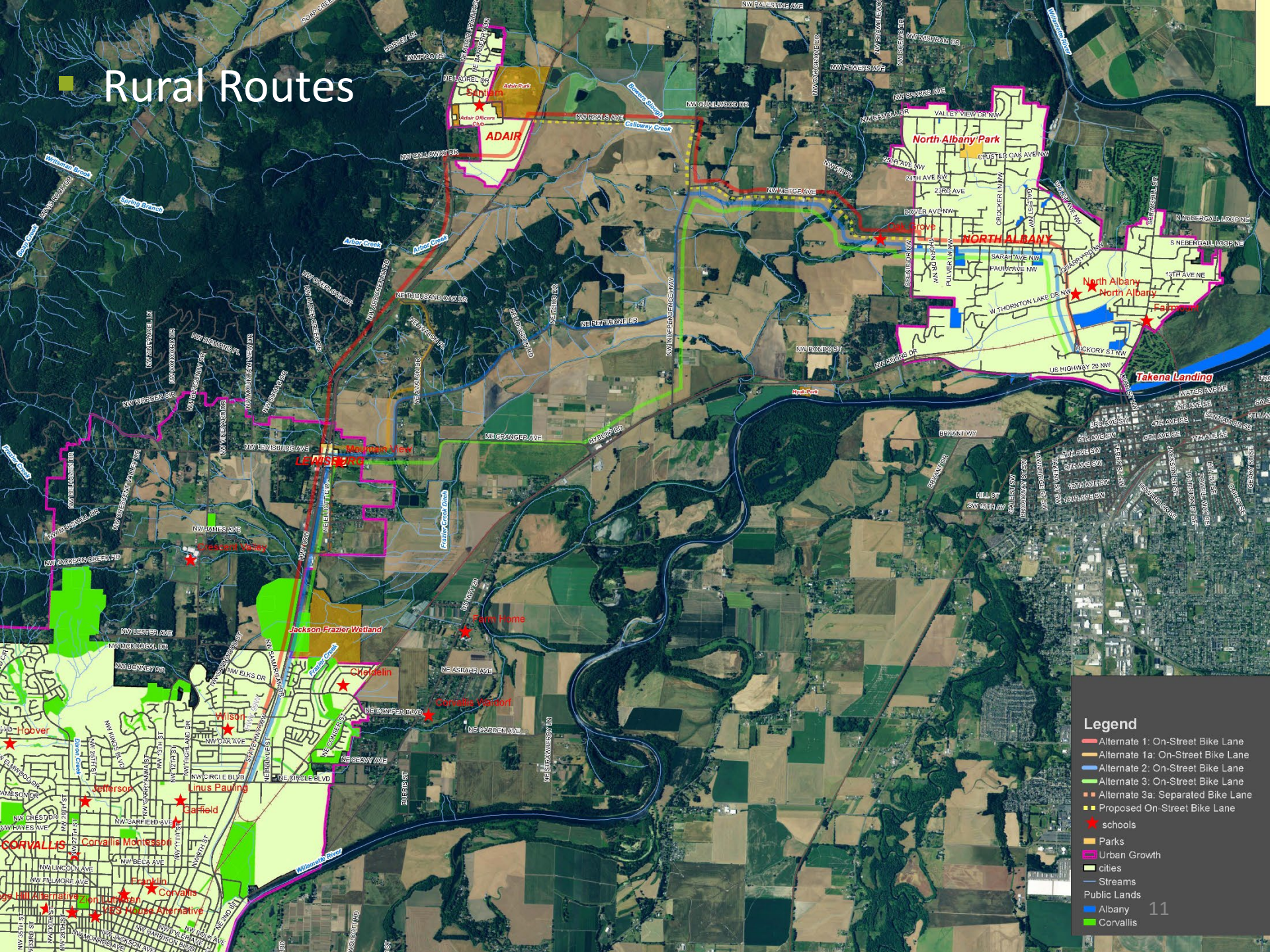
# Hwy 20 Routes



- Legend**
- Alternate 5: Separated Bike Path
  - Alternate 6: Separated Bike Path
  - Alternate 7: On-Street Bike Lane
  - Alternate 8: On-Street Bike Lane
  - Existing Bikeway
  - ▲ Proposed Bikeway
  - Connection Point
  - ★ Schools
  - Parks
  - Cities
  - Urban Growth
  - Streams
  - Public Lands
  - Albany
  - Corvallis



# Rural Routes



**Legend**

- Alternate 1: On-Street Bike Lane
- Alternate 1a: On-Street Bike Lane
- Alternate 2: On-Street Bike Lane
- Alternate 3: On-Street Bike Lane
- Alternate 3a: Separated Bike Lane
- Proposed On-Street Bike Lane
- schools
- parks
- Urban Growth
- cities
- Streams
- Public Lands
- Albany
- Corvallis



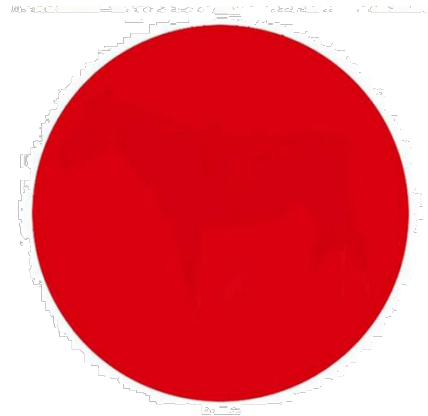
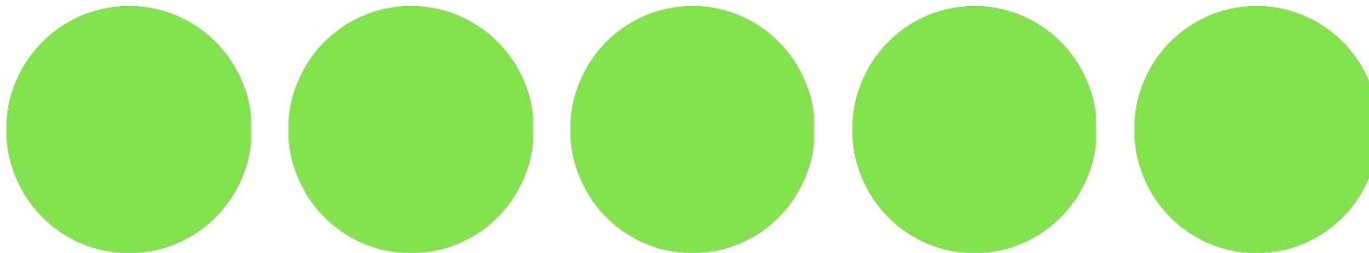
# Evaluate Routes / Dot Exercise

## 1. Visit the tables: River, Rural, Hwy 20 **(30 mins)**

- Rank the routes based on criteria
- Use your knowledge and experience!

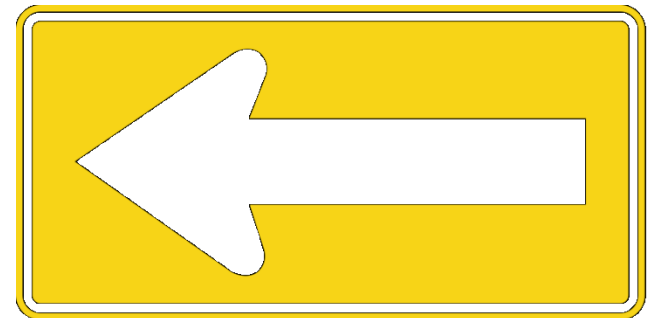
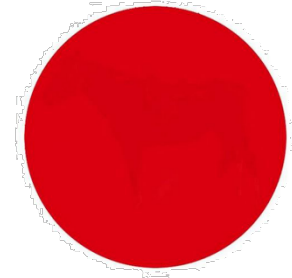
## 2. Dot Exercise **(15 mins)**

- Five green dots: place them on your top five routes
- One red dot: place it on a route you don't think should move forward (if you have one)



# Advisory Group Discussion

- Can any routes be sidelined?
- Which routes should be further studied? (*Goal ≈ 5 routes*)
- What ideas should be documented and sent to the Transportation System Plan Update team?



# Next Steps

---

<b>Wednesday, March 8, 10:00 a.m.-12:00 p.m.</b> Avery Building	<b>Technical Advisory Group Meeting #1</b>
<b>Wednesday, March 22, 12:00-2:00 p.m.</b> Corvallis-Benton County Public Library	<b>Meeting #3 Select Conceptual Routes</b> (Goal ≈ 3 routes)
<b>Wednesday, April 5, 5:30-7:30 p.m.</b> Benton County Sunset Building	<b>Community Open House</b>
<b>Wednesday, April 12, 1:00-3:00 p.m.</b> Avery Building	<b>Technical Advisory Group Meeting #2</b>
<b>Tuesday, April 25, 12:00-2:00 p.m.</b> Corvallis-Benton County Public Library	<b>Meeting #4 Select Recommended Route</b> (Goal = 1 route)
<b>Tuesday, May 16, 9:00-11:00 a.m.</b> Board Meeting Room	<b>Board of Commissioners Work Session</b>
<b>Tuesday, June 6, 12:00 p.m.</b> Board Meeting Room	<b>Board of Commissioners Meeting</b> <b>(Consider Phase 3)</b>