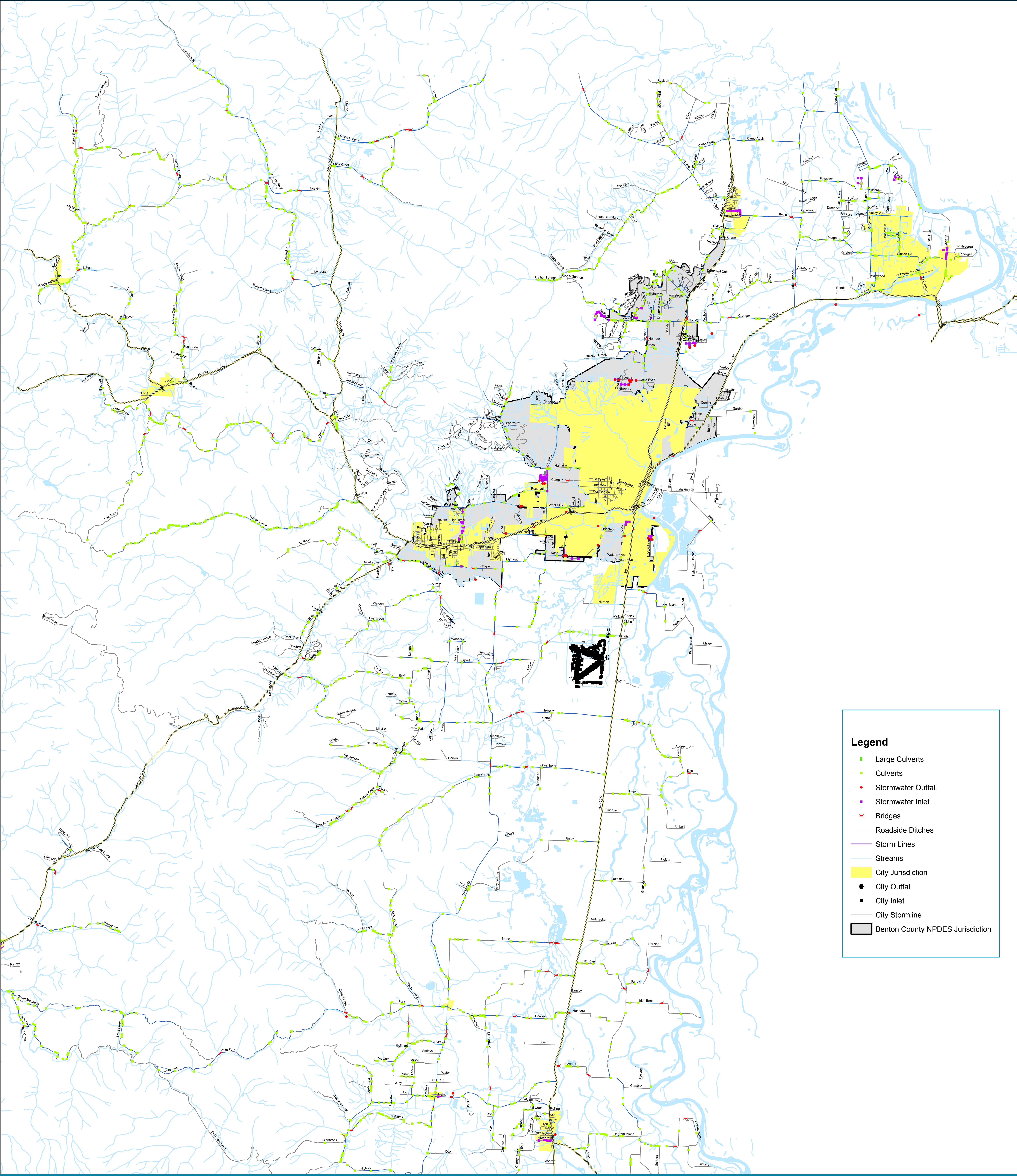


Stormwater Conveyance System

for unincorporated regions within the Corvallis Urbanized Area



Legend

- Large Culverts
- Culverts
- Stormwater Outfall
- Stormwater Inlet
- Bridges
- Roadside Ditches
- Storm Lines
- Streams
- City Jurisdiction
- City Outfall
- City Inlet
- City Stormline
- Benton County NPDES Jurisdiction



Benton County Public Works
360 SW Avery Ave.
Corvallis, Oregon 97333-1192
Phone: (541)766-6821
FAX: (541)766-6891

REVISED: April 5, 2014
FILE: S:\maps\PROJECTS\NPDES\Stormwater.mxd

This product is for informational purposes and may not have been prepared for, or be suitable for legal, engineering, or surveying purposes.
Users of this information should review or consult the primary data and information sources to ascertain the usability of the information.

