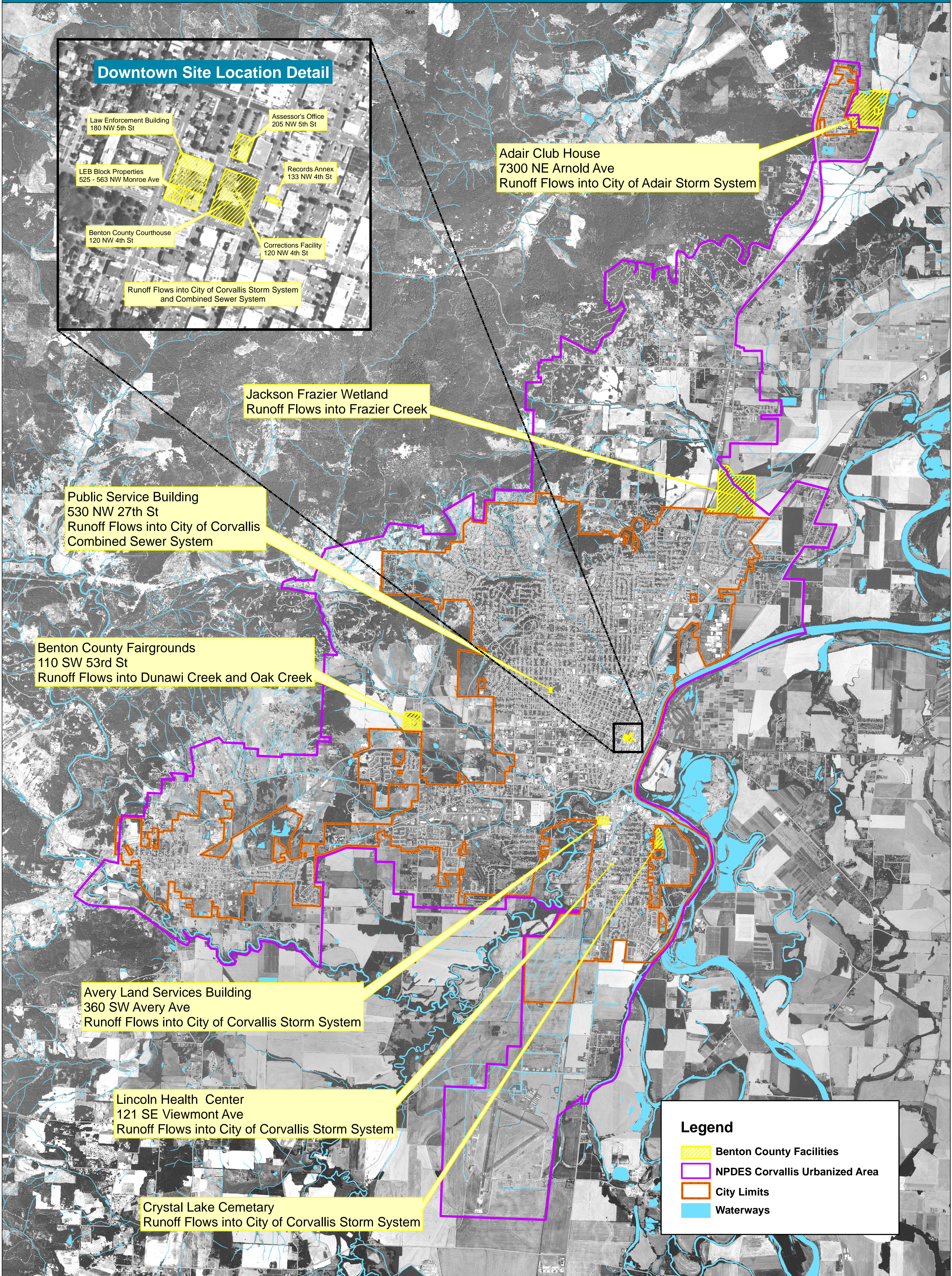


# Benton County Facilities in MS4 Areas



Benton County Public Works  
360 SW Avery Ave.  
Corvallis, Oregon 97333-1192  
Phone: (541)766-6821  
FAX: (541)766-6891

REVISED: August 3, 2009  
FILE: S:\maps\PROJECTS\NPDES\FacMS4Areas.mxd

This product is for informational purposes and may not have been prepared for, or be suitable for legal, engineering, or surveying purposes.

Users of this information should review or consult the primary data and information sources to ascertain the usability of the information.

0 0.5 1 1.5 2 Miles

